

LIBRARY
RECEIVED
★ MAR 4 1959 ★
U. S. Department of Agriculture

Ivory Fashion—'59 AARS Winner \$2.75

1959 Catalog of Modern GARDEN MATERIAL

Preferred Nursery Stock
for the Rocky Mountain
and Plains Region

Kroh's
Cover Collection
One of Each Rose
3 (Pictured) \$9.00
Postpaid



Kordes
Perfecta
\$3.50

Starfire—'59 AARS Winner
\$3.50



KROH BROS. Nurseries

P. O. BOX 536
LOVELAND, COLORADO

FLOWERING CRABS

Our Specialty

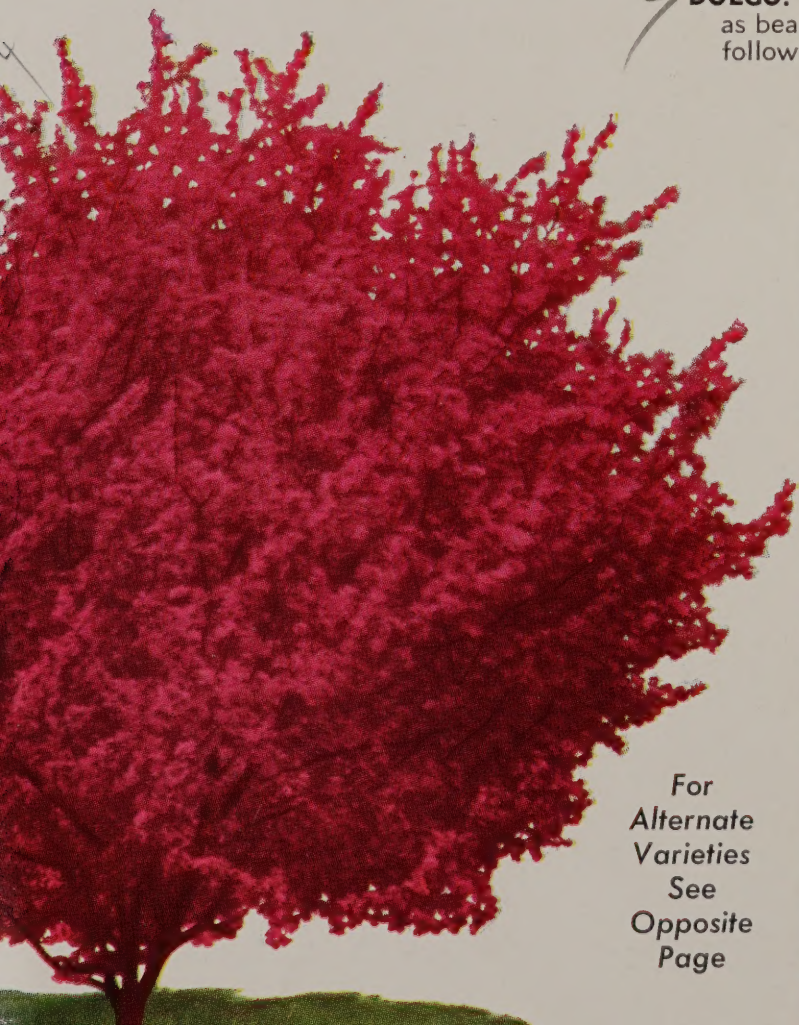


➤ **ELEYI.** 20-25 ft. Purplish maroon foliage, buds are a deep red opening late to rosy flowers that fade to a clear pink followed by decorative dark red miniature Apples.

➤ **HOPA (Red Flowering Crab).** 20-25 ft. Striking rosy red flowers followed by bright red fruit; foliage has soft bronzy tinge. A choice hardy variety.

➤ **ALMEY.** 15-20 ft. Large blossom of glistening red petals, white marking at base giving the effect of a five pointed star. Scarlet fruit retained till spring.

➤ **DOLGO.** 20 ft. A first rate hardy ornamental as well as bearing very useful fruit for jellies. White flowers followed by highly colored small crimson fruit.



For
Alternate
Varieties
See
Opposite
Page

Western Grown for Western Planting

The Rocky Mountain and Plains region comprise a distinct climatic area in that the higher altitude, limited rainfall, sudden temperature change, and the length of the growing season have a definite influence on plant growth. Evaporation of moisture from plants is high and they must have a more highly developed root system to maintain a normal growth balance. Bark and wood cells also build up resistance to atmosphere and temperature.

Some varieties that do well in lower, more moist climate will not adapt themselves to our growing conditions, and so cannot be considered. Fortunately, however, there are many varieties that have proven their adaptability here, and others are being tried and observed to enlarge the list of plant material especially suited to growing conditions in this area, both in fruit and ornamental stock. We take pride in participating in the leadership in testing plant material and bringing new proven hardy items to our western trade so that our customers may have the best nursery stock obtainable.

The viability of dormant plants, like the freshness of vegetables, is subject to rapid deterioration under inadequate storage facilities and inexperienced handling. Our facilities and many years of experience assures our customers the delivery of hardy, healthy and viable nursery stock.

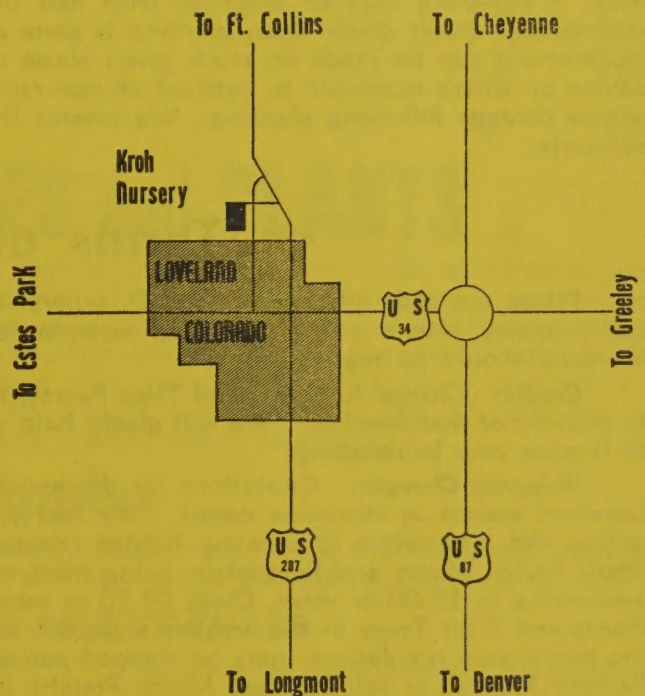
There can be only one conclusion in obtaining the greater value in your purchase of nursery stock; if it is acclimated, correctly grown and properly handled you will realize the maximum results in transplanting: if the varieties are adapted you may expect a successful continued growth.

Our Location

OUR LOCATION: One mile north on highway 287 from junction of highways U.S. 287 and U.S. 34 — Office and display yards one block west of highway. We are centrally located in the highly productive agriculture area of Northern Colorado, and within the fruit growing section of the Eastern Slope. Nursery stock in various stages of development can be seen in our fields throughout the year.

NATIONAL ENDORSED ROSES

Consumers Reports magazine with national circulation, designates Kroh Brothers Nurseries as one of a select number of firms in the United States to be a consistently good and reliable sources for roses. We are proud to have our roses merit this unsolicited recognition.



"WHERE OUR CUSTOMERS SEND THEIR FRIENDS"

Our annual list of nursery stock is being sent to an increasing number of interested home owners, either by virtue of new requests, or as a result of current patronage. We are glad to send it to you and are especially grateful to those who have recommended our stock to their friends.

Kroh Bros. Nurseries

Is one of the best equipped to serve your needs in the
Rocky Mountain Region

Easy access and prompt service for customers who come to the nursery.

Orders filled efficiently for shipping.

Excellent accommodations for housing our office, warehouse and storage.

Thorough understanding of fruit growing problems for this region, and practically flawless performance of fruit tree stock for orchardists.

Largest growers of acclimated stock in the Rocky Mountain Region.

Diversified stock for complete landscape planting as well as many items for the gardner who plants incidental items from time to time.

Most complete selection of container established stock for Summer planting.

We are always willing to assist you with your Landscape Planning arrangement to the extent of our practical experience. Landscape projects should be worked out well in advance of the Spring Planting rush to avoid disappointment.

Guarantee

All nursery stock is guaranteed to be true to name, and to be free from injurious insect pests and diseases as certified by state inspection; any proving otherwise will be replaced free or original purchase price will be refunded, but no greater liability will be assumed.

It is further guaranteed that all plants delivered are in good live condition; claims to the contrary must be made immediately on receipt of stock. After nursery stock is delivered in good condition, the future progress thereof is beyond our control and further results cannot be guaranteed. With reasonable care, however, we have confidence in successful continued growth of our stock after transplanting; therefore we shall replace once any stock sold at regular retail that fails to leaf out the first summer after planting at one-half the current retail each-rate price f.o.b. the nursery PROVIDED CUSTOMER NOTIFIES US before Sept. 1 following date of planting, with half price remittance accompanying report. (Full replacement credit given when planting is done and charge made for same by Nursery.) No replacement can be made on stock given abuse or neglect, planted unseasonably, against our advice or where customer is notified of non-replacement before purchase, or loss caused by winter damage following planting. We reserve the right to cancel replacement on delinquent accounts.

Terms of Sale

Prices are cash with order; C.O.D. orders must be accompanied by at least one-fourth cash; money orders and checks are recommended for remittance; orders with coins and currency should be registered.

Credit: Charge Accounts and Time Payment Plans must be arranged with our office prior to delivery of merchandise. We will gladly help you arrange for a "Home Improvement Loan" to finance your landscaping.

Shipping Charges: Quotations for the majority of items in this catalog are based F.O.B. Loveland except as otherwise noted. We feel that this is the fairest method; thereby eliminating the alternative of offering lighter cheaper grades to offset delivered prices. Roses Small Fruits, Mums and Perennials, being more uniform in size are quoted postpaid on orders amounting to \$5.00 or more, Glads \$3.50 or more. Such items as the Smaller Shrubs, Hedge Plants and Fruit Trees in the smaller sizes not indicated Postpaid that can be handled within the parcel post regulations, may be shipped parcel post, please add 15% to apply on postage. Railway Express or reliable fast Motor Freight is recommended in a large number of cases. Such shipments are sent with shipping charges payable for exact amount on arrival. Shade Trees, Balled Evergreens and stock established in containers are sent only by Express or Motor Freight.

Shipping Season: For spring, March 15 to May 10, Early April planting is best. Order in advance if possible.

Planting Service: Charges for planting are estimated on the individual circumstances and are not included in the price as quoted in the catalog.

Please Note: Sizes and prices are subject to change without notice prior to a subsequent price list.

FLOWERING CRABS

Flowering Crabs are becoming very popular as medium sized ornamental trees. Particularly desirable either as specimen trees or group planting in landscaping our modern homes. New introductions adding pyramidal growth types and richer color in foliage and bloom increases their potential usefulness. A row of these uprights, as a screen or background, in full bloom almost defies description.

ALDENHAM. 20 to 23 ft. A broad rapid growing tree, bronze foliage, brilliant reddish purple single to semi-double blooms followed by small purple red fruit.

BECHTELS. 12-15 ft. A dwarf crab bearing many rose-like large double pink flowers in May. A standard of excellence in flowering crabs.

FLAME. 20 to 25 ft. A very hardy shapely headed tree furnishing a multitude of pink buds opening to large single white blossoms with small bright red fruit. Very resistant to fire blight.

PURPLE FLOWERING. 20 to 25 ft. Very similar to Jay Darling, grows a little larger, with slightly deeper color blossom.

JAY DARLING. 18 to 20 ft. Develops rapidly red wooded, irregular with purplish green foliage, bright fall color. Blossoms large single purplish-red, sets medium size red fruit.

Hopa, Eleye, Dolga, and Almey shown on opposite page.

STRATHMORE. 15-20 ft. A narrow upright Tree, with flowers similar to those of "Hopa" but darker and less fading. Fine foliage remains reddish all summer turning red to scarlet in fall.

WABISKA. 20-25 ft. Semi upright in habit, foliage waxey green turning red in autumn, purplish-red semi double flowers, flesh of fruit tinged red, but few fruit.

FLOWERING CRAB (Size and Price Listing)

Variety	Size given in height					Taller sizes by trunk caliper.		
	2-3'	3-4'	4-5'	5-6'	6-8'	1-1 1/4"	1 1/4-1 1/2"	1 1/2-1 3/4"
Aldenham				4.50	5.25	6.50		
Almy				4.50	5.25	6.50		
Bechtels	1.85	2.75	4.00	5.25				
Dolga			2.65	3.25	3.95	4.50	5.95	
Eleye			2.95	3.75	4.50	5.25		
Flame					4.50	5.25	6.50	8.75
Hopa			2.75	3.75	4.50	5.25	6.50	8.75
Jay Darling			2.75	3.75	4.50	5.25	6.50	8.75
Purple Flowering						5.25	6.50	8.75
Strathmore			3.75	4.50	5.25	6.50		
Wabiska				3.75	4.50	5.25	6.50	8.75

FRUIT TREES and PLANTS

We doubt whether there is another section that has such a range of climatic conditions as the Rocky Mountain Plains region. Exposure and altitude are more varying factors than latitude. Our mountain range, as a rule, affords zones of protection along the base of the mountains and within sheltered valleys where fruit growing more readily expands to commercial proportions. In many parts of this section, existing plants or fruits have already pointed out what will or will not do well in a certain area. In all cases soil and watering should be favorable, and windbreaks planted where necessary.

Apples

One of the most useful trees in the world. May be planted as an ornamental shade tree from which enjoyable fruit is picked, or in several varieties making up the home orchard.

ONE-TREE APPLE ORCHARD

Grafting skill converts just one tree into an "ORCHARD" with up to six varieties on one tree. In building our "ONE TREE APPLE ORCHARD" we use a hardy crabapple trunk to which is grafted the following varieties, Red and Yellow Delicious, Red June, Jonathan, Jefferies and McIntosh. The sets of varieties are not classified on the individual tree but each tree will have the designated number of the above varieties

In ordering please state the tree size and number of varieties.

No. Varieties	4-5'	5-6'	6-8'	1-1 1/4"
3 Variety	2.25	2.95		
4 Variety	2.75	3.45	4.25	
5 Variety	3.45	4.45	5.25	6.00
6 Variety	3.95	4.95	5.95	6.75

(Illustrated inside back Cover)

APPLE Continued

Summer, Fall and Winter ripening varieties should all be included in the well rounded home orchard, with winter apples predominating. The Delicious and Jonathan are not quite as winter hardy for exposed higher altitude plantings.

Winter Varieties

- 7 **DARK RED DELICIOUS.** Often referred to as Double red. A much improved Delicious, turning completely red before it is ripe. Size 2, 3, 4.
- 7 **JONATHAN.** Medium size of finest quality, bright red, fine flavor; moderate grower. Size 2, 3, 4.
- 7 **HARALSON.** A Minnesota variety that is a winter commercial variety in this section. Early bearer, fruit fine grained and tender. Size 3, 4.
- 7 **McINTOSH.** Deep red, good size with crisp, tender, snow-white flesh. Has extremely pleasing flavor. Above average in hardiness and dependability. Size 1, 2, 4.
- 7 **YELLOW DELICIOUS.** This beautiful yellow apple is a bright golden yellow, sweetly acid flavor, good bearer, beginning at early age. Size 1, 2, 3, 4.

Summer Varieties

- 7 **RED JUNE** August. Medium size, deep red, good flavor; productive. Size 1, 2, 3, 4.
- 7 **YELLOW TRANSPARENT.** Ripens in August. A splendid early cooking and eating apple; pale yellow fruit. Hardy, bears young. Size 2, 3, 4.
- 7 **WHITNEY CRAB.** August. Hardy, good bearer; fruit small to medium, striped red and green, fine for eating and canning, sweet and crisp. Size 3, 4.

Fall Varieties

- 7 **WEALTHY.** September. Fine, reliable bearer of large red striped, tender, juicy, slightly sub-acid fruit. One of the finest and hardiest apples. Size 2, 3, 4.
- 7 **DOLGO CRAB.** Has very brilliant red fruit of small size, borne freely.

SEE FLOWERING CRABS

Choice of varieties alike or assorted

Priced each in lots of

Size	Aprx. Ht.	1-4	5-15	15-25
No. 1 1-1¼ in. trunk caliper	6-9 ft.	\$3.75	\$3.60	\$3.50
No. 2 ¾-1 in. trunk caliper	5-8 ft.	2.95	2.85	2.75
No. 3 9/16-7/8 in. trunk caliper	4-6 ft.	2.50	2.35	2.25
No. 4 9/16-11/16 in. trunk caliper	3-5 ft.	2.15	2.00	1.85

Alternate varieties and sizes available. Inquire at Nursery.

Cherries

Cherries bear fruit very soon after planting and are very desirable for pies and canning.

Caliper means diameter in inches at the base of the tree trunk. In our practice of producing stocky, well branched trees so necessary for successful development in our western climate the height to which we grow them is of secondary importance.

SOUR CHERRIES

- 7 **ENGLISH MORELLO.** Ripens late July. Fruit large, nearly black, very attractive. Sizes 3, 4, 5, 6.
- 7 **MONTMORENCY.** The best all around sour cherry grown. Ripens mid-July; large, bright red. Sizes 1 to 6.
- 7 **EARLY RICHMOND.** Ripens about July 1st; medium sized, red. Size 3.
- 7 **HANSEN BUSH CHERRY.** Under Shrub.

SWEET CHERRIES

Generally not recommended northly on the Eastern Slope, not branched.

- 7 **BING.** Black sweet. Sizes 3.
- 7 **BLACK TARTARIAN.** Black sweet, that makes a good polinizer for other sweet cherries. Size 3.
- 7 **YELLOW GLASS.** Hardest yellow. Sizes 3.

Prices each in lots of

Size Trunk Caliper	Aprx. Ht.	1-4	5-15	15-25
No. 1 1-1¼ in.	5 ft. up	4.75	4.65	4.50
No. 2 ¾-1 in.	4½ ft. up	3.75	3.65	3.50
No. 3 11/16-7/8 in.	4 ft. up	3.00	2.90	2.75
No. 4 9/16-11/16 in.	3½ ft. up	2.25	2.15	2.00
No. 5 7/16-9/16 in.	3 ft. up	1.75	1.65	1.55
No. 6 5/16-7/16 in.	2½ ft. up	1.25	1.20	1.15

Peaches Pears

Peaches, like sweet cherries are generally not recommended northly on the eastern slope of the Rockies and Plains. However many a back yard or home orchard tree in Eastern Colorado has on occasion borne lovely crops of this fruit. Western Slope districts are of course nationally famous for Peaches and other more tender tree fruits.

➤ **ELBERTA.** The greatest commercial peach on the market today. Fruit large, yellow with red check, juicy and highly flavored. Size 1.

➤ **HALEHAVEN.** Highly popular recent introduction. Produces firm large fruit, yellow with generous red shading. Excellent flavor. Size 1.

➤ **POLLY.** White freestone having more cold resistance than the average variety. Has luscious flavor, juicy but firm. Late August. Size 1.

➤ **BARTLETT PEAR.** The leading late summer pear. Large, yellow with blush, juicy, sweet, high quality. Size 1, 2,

Peach or Pears.

Size	Caliper	Appr. Ht.	Each
No. 1	11/16-7/8 in.	4½ ft. & up	\$2.45
No. 2	9/16-11/16 in.	3 ft. & Up	2.15

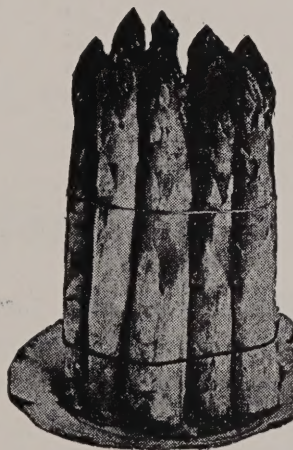
Garden Roots

ASPARAGUS.

Mary Washington, the leading rust-resistant variety, 2 yr. No. 1 plants. Post Paid. Per 12, \$.90; Per 25, \$1.50; Per 100, \$5.00.

HORSERADISH

Plant a few crowns and grow your own. Large crowns. Post Paid. 3 for \$.65; per 12, \$2.00.



Mary Washington

RHUBARB

VICTORIA. Medium size, very tender stalks. Large roots.

CANADA RED. New Improved. Like its name indicates, it is a new red-stalked variety, beautifully colored. Medium sized stalks, very tender. Unexcelled for pie, cooking or canning. Large roots.

Post Paid	Ea.	Per 3	Per 12
Victoria	\$0.40	\$1.00	\$3.00
Canada Red ..	\$1.00	\$2.50	\$9.00

Plums



Oyata Cherry-Plum

American Type

➤ **OPATA, Cherry-Plum.** The cherry plums are widely grown hardy medium size plums. Bearing very young with excellent flavor and very useful for jams and jellies. Oyata fruit is purplish red with green flesh. Size 2, 3.

➤ **SAPA, Cherry-Plum.** Fruit purple red, thin skin, wine red flesh. Size 2, 3.

➤ **SUPERIOR.** Plum of very large size. Color red with yellow flesh; fine pleasing flavor. Tree vigorous, productive. Size 2 and 3.

European Type

➤ **GREEN GAGE.** Very gratifying in rich mild delicious sweet flavor. Medium to large. August. Size 1, and 2.

➤ **STANLEY PRUNE.** We recommend it as the top prune. Under observation for over twenty years, we find it has shown no ordinary winter killing. Bears young, frequently in three years, set heavy crop just about as regularly as apples. Fruit is large deep bluish purple, firm and sweet, excellent quality fresh or canned. Size 1 and 2.

Size	Caliper	Appr. Ht.	Each
No. 1	11/16-7/8"	4½ ft. & up	\$2.45
No. 2	9/16-11/16"	3 ft. & up	2.25
No. 3	7/16-9/16"	2½ ft. & up	1.85

Alternate varieties and sizes available. Inquire at Nursery.

SMALL FRUITS

We wish to call your attention to the usefulness of Small Fruits in the garden. In addition to their unequalled value as delightfully flavored sauce, jellies, and preserves their usefulness as ornamental vines and shrubs should not be overlooked in planning the home garden. Even Strawberries make a useful and attractive low-growing border around perennial and flower beds.

Grapes



Fredonia

Plump clusters of grapes ripened on your own vines taste twice as good. Double value is often gained for vine covering of fences, arbors, and trellises.

- 7 **BETA.** Where a rugged grape is required, this deserves very serious consideration. A cross between Concord and wild grape will adequately support the home needs for jelly and juices. Hardy without protection. Ideal for arbors and fences.
- 7 **CACO.** A new red grape among the earlier ripening varieties. Bunches are compact and of good size and form. Pleasant sweet flavor.
- 7 **CONCORD.** The widely planted blue-black grape.
- 7 **FREDONIA.** A new very early delicious black grape, with large berries and bunches. Ripens two-weeks ahead of Concord.
- 7 **NIAGARA.** Productive "white" variety. Large berries mature to light greenish-yellow; has sweet mellow flavor.

All vines are heavily rooted 2-year No. 1 size

Post Paid	Ea.	Per 3	Per 10
Beta60	1.65	5.00
Caco65	1.80	6.00
Concord55	1.50	4.50
Fredonia60	1.65	5.00
Niagara60	1.65	5.00

THORNLESS BOYSENBERRY

The sensational berry, large size and wonderful flavor; purple color. Canes require winter protection under exposed conditions. (Plants guaranteed to be in good live condition on arrival only.)

Price per 4, 90c; per 12, \$2.50;
per 25, \$4.50

Currants

7 **NEW RED LAKE CURRANT.** Excellent quality, large red berries in long well-filled clusters. A Minnesota introduction that has become the leading garden variety.

2 yr. No. 1	Ea.	Per 3	Per 10
Post Paid			
New Red Lake	.65	1.75	5.50

Gooseberries

7 **CHAMPION.** A vigorous, very productive variety, planted extensively for commercial use; easy to pick. Large greenish-yellow when ripe.

7 **PIXWELL.** Fine new variety from the north. Very hardy, vigorous, heavy yielding. Berries large light green maturing to pink. Name Pixwell derived from long stems for easy reach and sparse thorns. Colorful autumn foliage.

2 yr. No. 1	Ea.	Per 3	Per 10
Postage Paid.			
Pixwell	1.00	2.75	8.50

Winter Hardy Strawberries

The Cheyenne Horticulture Field Station of the U.S.D.A. of Cheyenne, Wyoming, made selections of native Rocky Mountain wild strawberries from a broad area of the Rocky Mountain region in 1934. The best of the native plants were crossed with commercial strains, and after years of testing, selecting and recrossing the station unveiled a new strain of June bearing varieties with incomparable hardiness and remarkable flavor, including Cheyenne I, II and III and Sioux. Continued efforts resulted in the introduction of two everbearing varieties "Radiance and Arapahoe" in 1954, retaining the unequalled hardiness of the native plant; also capturing the flavor and aroma of the wild strawberries with fruit size of the commercial strains.

From seedling plants of additional crossing by USDA of Cheyenne, the Experiment Station of North Platte, Nebraska made selection and introduced Ogallala in 1958. In our field test it has shown equal hardiness and a desirable addition to the hardy everbearers.

The exceptional hardiness of the June bearing varieties opened great new home garden strawberry possibilities in the severe dry winter climate of the Great Plains and Mountain Areas where growing strawberries had not been practical before; however we have discontinued these in favor of the more popular everbearing characteristic of Radiance, Arapahoe and Ogallala with equal hardiness, quality and additional production.



Radiance Cheyenne Everbearer

ARAPAHOE U.S.D.A. 1954 Introduction.

A robust vigorous plant; while lacking some in the exceptional winter hardiness of Radiance, has not shown damage here without mulching. Its reluctance to set runner plants makes Arapahoe desirable for individual hill culture. Produces large broad conical firm bright red sub-acid delightfully flavored berries in abundance. Sustained production June till frost.

**PRICED; per 25, \$3.25; per 50, \$6.00
per 100, \$10.50; per 200, \$19.50**

Raspberries

We recommend covering Raspberry canes for winter protection on Eastern slope and plains. Your efforts will be well rewarded in additional delicious fruit.

OGALLALA USDA, 1958 Introduction. A

medium size plant with dark green leathery dense foliage which often hides the fruit. Plant vigorous and reproduction moderate. The medium to large size fruit are rich dark red clear through, sweet with mild aroma. Fruiting is continuous except for about two weeks rest period immediately following spring crop.

**PRICED: per 25, \$2.75; per 50, \$5.00
per 100, \$9.00; per 200, \$16.00**

RADIANCE U.S.D.A. 1954 Introduction.

The first everbearing strawberry of the Cheyenne series. The hardiest everbearer ever tested in the high plains. Plants are medium size, vigorous, dark green, and sets average amount of runner plants. Produces abundance of medium to large conical deep red sub-acid to sweet berries with highly gratifying delicious flavor and aroma inherited from its native parentage. Sustained production, June till frost.

**PRICED: per 25, \$2.00; per 50, \$3.75
per 100, \$7.00; per 200, 12.50**

BLACK CUMBERLAND. One of the most reliable and widely planted, large juicy fruit.

LATHAM. A widely planted red raspberry. Prolific, strong, mosaic-resistant canes; firm, very large berries.

SEPTEMBER. Everbearing. New origination of Dr. Yeoger at the University of New Hampshire. Healthy, hardy, vigorous grower and heavy producer of large firm bright red berries on winter protected old canes. Heavy early fall crop produced on new canes.

One year No. 1 plants

	per 6	per 12	per 25
Black Cumberland	1.15	2.00	3.75
Latham	1.45	2.50	4.65
September	2.40	4.50	8.50

ORNAMENTALS for BEAUTY



Practically every family has pride in the appearance of the home grounds. Selection of trees, shrubs, evergreens, vines and flowering plants that are adapted and their use in an orderly manner makes it possible for practically everyone to have the pleasure of a home with attractive surroundings.

Whether it be additions to the home landscape by degrees or complete plantings, there is no investment that can be made in home improvement that is as reasonable in proportion. Structural improvement and home furnishing of course are essential, but the investment for landscaping is the only one in which the per dollar value will increase instead of depreciate.

Shrubs For Flowers and Foliage

The planting sizes of the different varieties listed here are described by height. We wish to stress the fact that height is being given for stock that has been transplanted one or more times and has a heavy, well developed root system and well branched top. This stock should not be confused with light grades of easily propagated stock that is often featured by mail at low prices.

Numbers following names represent approximate height at maturity under average normal conditions. **Shrubs are not quoted Postpaid.**

ALMOND, Double Pink Flowering. 5-6 ft. Branches thickly studded with double pink rose-like blossoms in spring before leaves appear. Does best in protected location. 2 to 3 ft. each \$1.65

BARBERRY, Mentorensis. 4-5 ft. Semi evergreen upright shrub carrying heavy thick, dark green foliage changing with frost to pleasing autumn shades. Leaves continue to adhere nearly all winter. Gives air of refined simplicity and beauty to a planting. 18-24 in. ea. \$1.95; 2-3 ft. ea. \$2.45

BARBERRY, Thunbergi, 4 ft. Dwarf shrub used extensively in foundation planting, groups and hedges. Full branching habits; rich green foliage turning red in autumn; red berries. 18-24 in. ea. \$1.25; 2-3 ft. ea. \$1.50

BARBERRY, Red Leaf, 4 ft. The same as Barberry Thunbergi except for colorful bronzy red foliage all summer long. Locate in sunlight for best color. 15-18 in. ea. \$1.25; 18-24 in. ea. \$1.50.



Butterfly Bush

BUTTERFLY BUSH, Buddleia. Summer Lilac 4-6 ft. Usually kills to ground, but makes quick, bushy well branched growth, producing large spikes of fragrant lilac-like bloom, July on. Blooms first year, strong plants.

DUBONNET—most popular dark wine.

EMPIRE BLUE—Lilac-toned Aster-blue.

ROYAL RED—rich dark royal purple.

WHITE CLOUD — Beautiful white.

Each 95c; 3 for \$2.75.

BUCKTHORN, Rhamnus Cathartica, 8-10 ft. A very hardy and durable shrub, dark green foliage. For General landscape use in severe climate, makes a long lived beautiful hedge or screens. 18-24 in. ea. \$1.10; 2-3 ft. ea. \$1.35

CARAGANA, Arborescens, "Siberian Pea Tree." 10-12 ft. Very hardy tall shrub for specimens, screens or hedges; attractive locust like foliage, green stems. Small yellow pea shaped blooms May—June. 18-24 in. ea. 90c; 2-3 ft. ea. \$1.15; 3-4 ft. ea. \$1.45; 4-5 ft. ea. \$1.95

CARYOPTERIS (Blue Mist Spirea)

20-30 in. A real contribution to the meager list of late-flowering, shrubs, Covered with small powder-blue fringed flowers in numerous clusters on a round mound like plant from August until frost Very hardy. 12-15 in. ea. \$1.10 15-18 in. ea. \$1.25; 18-24 in. ea. \$1.65

CURRANT, Alpine, 3 to 4 ft. Hardy dwarf bright green foliage shrub developing neat compact shape. Adapted in sun or shade. 15-18 in. ea. \$1.50 18-24 in. ea. \$1.75; 2-2½ ft. ea. \$2.10

COTONEASTER, Acutifolia, 6 ft. Very hardy shrub assuming shapely proportion. Foliage rich dark green, glossy on upper side, medium size, fairly dense. Beautiful autumn color; profusion of blue-black berries in fall. Sun or shade. 18-24 in. ea. \$1.15; 10 for \$10.00 2-3 ft. ea. \$1.50; 3-4 ft. ea. \$1.95

DOGWOOD, Colo. Native Red Stem, 5-7 ft. Shapely shrub, medium to large foliage; white flower clusters followed by white berries. Bright red branches liven the winter landscape 2-3 ft. \$1.75 3-4 ft. ea. \$2.15

DOGWOOD, Yellow Stem (Cornus Golden Twig) 6-8 ft. A striking yellow branched form of Dogwood. Its distinct yellow bark has fine winter effect. 2-3 ft. ea. \$1.65.

EUONYMUS, Alatus, Japanese Spindle Tree, 10-12 ft. Interesting winged corky bark. Yellow flowers May-June. Leaves turning brilliant crimson in autumn, scarlet fruit. 18-24 in. potted Each \$2.95

EUONYMUS Atropurpureus. Wahoo or Burning Bush. 10-12 ft. Especially attractive are the many bright red berries carried well into winter. Foliage attractive green in summer, turning rich fall color. 18-24 in. ea. \$1.25. 2-3 ft. ea. \$1.65.

FLOWERING QUINCE —See Page 11

FORSYTHIA, Arnold's Dwarf, 3'. This new low growing shrub has great merit for foundation, accent and ground cover use. Its low drooping branches covered with golden yellow bolssoms make it a early spring delicacy. 12-18 in. ea. \$1.15; 18-24 in. ea. \$1.40

FORSYTHIA Spectabilis. See Page 11

GINNALA MAPLE, 10-12 ft. Large shrub that may also be pruned to produce a dwarf tree with one or more trunks. Typical maple foliage turns a brilliant red fall. 2-3 ft. ea. \$1.75 3-4 ft. ea. \$2.25; 4-5 ft. ea. \$2.95

GOLDEN ELDER. A large spreading bush with handsome yellow foliage White flowers in June and July followed by black fruit in Aug. and Sept. 2-3 ft. ea. \$1.65

HANSEN'S BUSH CHERRY 3-4 ft. A hardy fruit producing shrub bearing many small sweet dark plum like fruit, where other cherries fail. White blooms in spring, colorful fruit and foliage contrast followed by red leaves in fall make this hybrid bush cherry very useful and desirable planted as border or hedge. 18-24 in. ea. 75c; 3 for \$2.00; per 10 \$5.75 2-3 ft. ea. 95c; 3 for \$2.50; per 10 \$7.85.

HONEYSUCKLE, Korolkowi, Blueleaf

Honeysuckle. 8-10 ft. Broad blueleaf, beautiful foliage, pinkish white bloom, red berries. Very hardy.

3-4 ft. ea. \$1.95; 4-5 ft. ea. \$2.25

HONEYSUCKLE Clavey's Dwarf. 3-5 ft.

A recently introduced hardy, compact addition to the popular honeysuckles. Small yellow flowers in May followed by red berries.

18-24 in. ea. \$1.25; 2-3 ft. ea. \$1.45



Zabeli Honeysuckle

HONEYSUCKLE, Zabeli,, True Red

Honeysuckle. 8-10 ft. An improved honeysuckle with decided rose-crimson blossoms, which is in contrast with the pink shades of other honeysuckles. Blooms May-June followed by scarlet berries; very hardy. 2-3 ft. ea. \$1.45; 3-4 ft. ea. \$1.75; 4-5 ft. ea. \$2.25.

HYDRANGEA, A.G. 3-5 ft. Large clusters, snow-white flowers, July-Aug.; large foliage. Usually starts from ground each spring in this climate. Not recommended in strongly alkaline soils. **Strong 3 year plants, each. \$1.50.**

MOCKORANGE Glacier. 4-6 ft. Shapely well branched and foliated shrub with loads of double very fragrant white blossoms profused in clusters, June-July. 18-24 in. ea. \$1.45; 2-3 ft. ea. \$1.85

MOCKORANGE, Virginal. 6-8 ft. Medium growers, bearing many beautiful fragrant semi-double flowers over a long season from May on. 18-24 in. ea. \$1.40; 2-3 ft. ea. \$1.75

NINEBARK, Aureas, Goldleaf Ninebark. 6-8 ft. The golden foliage adds color to shrub groupings or in borders. Sets small white flowers in clusters in late May—June. 3-4 ft. ea. \$1.75

NINEBARK, Dwarf. 4-5 ft. A medium low growing shrub giving a fine trim appearance; compact form; dense attractive green foliage. Neat white flower clusters, early June. 2-3 ft. ea. \$1.45; 3-4 ft. ea. \$1.75

PRIVET, Amur River. Chiefly used for trimmed hedges. Is satisfactory up to about 5,000 ft. See hedge plants.

POTENTILLA Farreri, See Page 11

POTENTILLA Dahurica, 3 ft. up. Plant quite similar to Farreri except for having white blossoms.

15-18 in. ea. \$1.50; 18-24 in. ea. \$1.75

PRUNUS CISTENA, see Page 11

PRUNUS NEWPORT. 10-12 ft. Can be grown as small tree or large shrub, growing taller than P. Cistena. Foliage carries a rich cast of reddish purple throughout the season.

Shrub or Tree Form

2-3 ft. ea. \$2.10; 3-4 ft. ea. \$2.75

4-5 ft. ea. \$3.45

PRUNUS THUNDERCLOUD. 8-10 ft.

New and possibly the best purple leafed plum. Finely branched, crinkley reddish-purple attractive foliage preceded by small pink blossoms in early spring.

2-3 ft. ea. \$2.35; 3-4 ft. ea. \$2.95

4-5 ft. ea. \$3.45

PRUNUS TRILOBA, Flowering Almond

or **Flowering Plum,** 5-7 ft. Attractive grown as ornamental tree or shrub, decked with quantities of double rose-type pink blossoms just as new foliage appears in the spring.

18-24 in. ea. \$1.65; 2-3 ft. ea. \$2.15

PRUNUS TOMENTOSA, Nanking Cherry,

Desirable neat branching shapely shrub heavily laden with bloom before dark green foliage appears. Bears red cherry-like fair size, good flavored fruit useful for preserves. 18-24 in. ea. \$1.20; 2-3 ft. ea. \$1.45; 3-4 ft. ea. \$1.80 4-5 ft. ea. \$2.10

SNOWBALL. Common. 8-10 ft. Well known shrub forming many balls of pure white flowers in May-June.

2-3 ft. ea. \$1.75; 3-4 ft. ea. \$2.25

SNOWBERRY. Red (Coralberry.) 4-5 ft.

Attractive variation from the white Snowberry in that it has smaller red berries that cluster in ropes along the stems and with slightly darker foliage. 18-24 in. ea. \$1.90; 2-3 ft. ea. \$1.10; 3-4 ft. ea. \$1.45

SNOWBERRY. White (Racemosus.)

4-5 ft. Of fairly compact growth; attractive green foliage. Tiny pink flowers in June followed by large white berries remaining into winter.

18-24 in. ea. \$.85; 2-3 ft. ea. \$1.00;

SPIREA Frobeli. 3 to 4 ft. A summer blooming dwarf spirea with crimson pink flower clusters

15-18 in. ea. 95c; 18-24 in. ea. \$1.20

SPIREA Van Houtte. 5 to 6 ft. Well known popular shrub, sometimes called "Bridal Wreath." Graceful habit of growth. A "fountain" of white flowers in late May.

18-24 in. ea. \$.90; 2-3 ft. ea. \$1.10;

SUMAC, Staghorn. 15-18 ft. A large shrub or tree; colorful red foliage and scarlet fruit clusters in autumn.

2-3 ft. ea. \$1.20

TAMARIX *Hispida*. 10-15 ft. One of the hardiest and best Tamarix; has feathery silvery foliage; bright coral-pink flowers, June July. For best success, Tamarix should be cut back at least half when planting.)
2-3 ft. ea. \$1.45

VIBURNUM *Lantana*. "Wayfaring Tree."
8-10 ft. Upright growing shrub with heavily veined rich green foliage. Heads of white flowers in June, followed by red and black berries.
2-3 ft. ea. \$1.65; 3-4 ft. ea. \$2.10

VIBURNUM *LENTAGO*, Nannyberry.
10-14 ft. Large upright growing shrubs, shiny green leaves turning a rainbow of fall colors. Blossoms single white in May sets large blue-black fruit.
2-3 ft. ea. \$1.50; 3-4 ft. ea. \$1.95

VIBURNUM, *Opulus*. **European High Bush Cranberry**, 10-12 ft. Hardy shrub single white flower in large clusters April-May, followed by scarlet fruit hanging on until spring.
18-24 in. ea. \$1.45; 2-3 ft. ea. \$1.75

Lilacs

LILAC *Syringa*



This class of shrubs is of great value for Western planting; they are hardy, drought resistant, and unexcelled during their blooming season for beauty.

COMMON PURPLE LILAC. 8-10 ft.
The fine old familiar lavender-purple.
18-24 in. ea. \$1.00; per 10 \$9.00
2-3 ft. ea. \$1.35; per 10 \$12.50

HIAWATHA LILAC. 8-10 ft. Remarkable blossoms in heavy clusters, deep rose-pink, forming as part of new growth escaping late spring freezing. Large luxuriant foliage.
18-24 in. ea. \$2.25; 2-3 ft. ea. \$2.95

PERSIAN LILAC. *Rothomagensis* type.
8-10 ft. Flowers few days later than Common Lilac; color attractive lilac shade, rosy overcast. Medium size foliage and graceful habit of growth. Starts blooming young. One of the most satisfactory Lilacs.
18-24 in. ea. \$1.15; per 10 \$10.00
2-3 ft. ea. \$1.45; per 10 \$12.50
3-4 ft. ea. \$1.85; per 10 \$17.00

VILLOSA LILAC, Late Lilac. 6-8 ft.
Bushy compact grower with large attractive foliage, light lavender pink flowers.
18-24 in. ea. \$1.10; per 10 \$9.50
2-3 ft. ea. \$1.40; per 10 \$12.00

FRENCH HYBRID LILACS

The Hybrid strains have added much in variety of color to the popular Lilac. Bushes similar to the Common Lilac but with decided difference and variation in color of bloom.

ALPHONSE LAVELLE. Large trusses of double true lilac-colored blossoms.
BELLE DE NANCY. Massive trusses of double satiny-rose-pink.
CHARLES JOLY. Large heads of double rich red. Good grower.
CONGO, Single deep wine red blossoms. One of the best.
LUDWIG SPAETH. Single, deep purple, large trusses on shapely plants.
MICHEL BUCKNER. Single, pink-lilac buds merging to blue-lilac as open.
PRES. GREVY. Double beautiful pale blue. Blooming in large trusses.
Priced Alike or Assorted.
18-24 in. ea. \$1.65; per 10 \$15.00
2-3 ft. ea. \$2.25; per 10 \$20.00
3-4 ft. ea. \$2.85; per 10 \$25.00

"PLANT 'EM GROWING"

We have customers drop in or phone us inquiring as to what we mean by "Plant 'Em Growing". This comparatively new innovation in merchandizing plant material is proving increasingly popular, mutually advantageous and extremely practical; also offering an unprecedented shopping and planting convenience.

We simply plant or transplant ornamental plants into a pot or container filled with well balanced and carefully formulated soil. Most plants are carefully grown in the container a year or more before being offered for sale, thus developing a well established root system within the container and a shapely top. Ornamental plants well established may then be planted at your home in mid-summer while growing lushly without loss or even a set back. Thus we get "Plant 'Em Growing".

Hedging and Windbreak Plants

The following varieties of trees and shrubs are some of the most satisfactory for trimmed hedges, informal hedges, screens, borders, and windbreaks. We briefly point out possible recommended uses of the varieties listed below.

Trimmed hedges have plants spaced from 6 to 12 inches or more apart with 9 to 12 inches being most common. Hedging stock should be trimmed back severely (1/2 or more) when planted to induce thick growth at the bottom. For screen or borders, plants are usually spaced from 18 inches to several feet apart, depending on the variety and the effect desired.

Wind breaks consist of one or several rows. Where several rows are used, the lower growing variety is placed on the outside, or windward side. Caragana, for example, and graduating to a taller variety such as Russian Olive, and still a taller variety on the inside, such as Chinese Elm. An Evergreen row will add density particularly during winter.

Further description of the following varieties is noted in listing of large landscape sizes under trees and shrubs.

BARBERRY, Thunbergi, Low trimmed or informal hedge. Not so successful at higher altitudes or in strongly alkaline soils.

BARBERRY, Red Leaf. Same as Thunbergi, with colorful red leaves.

CARAGANA, Arborescens. Very hardy trimmed hedge 3 to 5 feet. Screens, border or windbreak.

CHINESE ELM. The use of Chinese Elm for windbreaks has exceeded that of any other deciduous variety in the plains area. Also used for quick 4 to 7 ft. trimmed hedge.

COTONEASTER, Acutifolia. Very hardy, dense, glossy trimmed hedges 2 to 4 feet or 5 to 7 feet screen border. Hardier than Privet for the higher exposed plains area.

EVERGREENS. The use of evergreens in windbreaks and as trimmed or informal hedges is becoming increasingly popular. Our Baby Evergreen section (Page 16) quotes economical and suitable sizes.

HONEYSUCKLE, Zabeli. Fast growing, hardy dense trimmed hedge 3 to 6 feet, or informal screens 8 to 10 feet.

PRIVET, Amur River. Dense, rich green trimmed hedge 2 to 4 feet.

PRIVET, Swedish. Trimmed hedge 2 to 4 ft. A finer branched and leafed variety. Holds foliage well into winter.

PRIVET, Lodense. A dwarf, dense 1 to 2 ft. hedge. Fine in somewhat sheltered areas.

RUSSIAN OLIVE. Windbreak; trimmed hedge. 4 to 6 feet. Tall screen or border.

SPIREA, Van Houtte. Beautiful white flowering informal hedge, screen or border.

SPECIAL WINDBREAK STOCK

	Per 10	Per 100
Chinese Elm		
3-4 ft. heavy	2.85	25.00
4-5 ft. heavy	3.95	35.00
5-6 ft. heavy	5.50	50.00
Russian Olive		
3-4 ft. heavy	3.85	35.00
4-5 ft. heavy	4.95	45.00

PRICES OF HEDGES AND WINDBREAK PLANTS

Hedge material is smaller, lighter stock than that listed under Trees and Shrubs.

	Per 25	Per 100
BARBERRY, Red Leaf, 15-18 in. branched	\$12.50	\$45.00
BARBERRY, Thunbergi, 12-18 in. branched	7.00	25.00
CARAGANA, seedlings, 18-24 in.	4.50	16.00
CHINESE ELM, 12-18 in. seedlings	1.50	5.50
CHINESE ELM, 18-24 in. seedlings	2.25	8.00
CHINESE ELM, 2-3 ft. seedlings	3.50	12.50
CHINESE ELM, 3-4 ft. seedlings	5.00	18.00
COTONEASTER, Acutifolia, 18-24in. branched	12.50	45.00
HONEYSUCKLE, Zabeli, 18-24 in. branched	12.50	45.00
POTENTILLA FARRERI, 12-15 in branched	13.75	50.00
PRIVET, Amur River, 12-18 in., 2 cane	7.00	25.00
PRIVET, Swedish, 2-3 ft., 4 canes and up	13.75	50.00
PRIVET, Lodense, 9-12 in. branched	10.00	37.50
RUSSIAN OLIVE, 18-24in. branched seedlings	3.50	12.50
RUSSIAN OLIVE, 2-3 ft. branched seedlings	5.50	19.50
RUSSIAN OLIVE, 3-4 ft. branched seedlings	7.00	25.00
SPIREA, Van Houtte, 18-24 in. branched	12.50	45.00

FLOWERING SHRUBS



FLOWERING QUINCE

FLOWERING QUINCE. *Cydonia japonica*. 5-6 ft. Bush becomes blaze of color with beautiful uniform scarlet flowers in spring before leaves mature. 2-3 ft., each \$1.65; 3-4 ft., each \$1.95.

Shrub Listing pages 6-9.

PRUNUS CISTENA

PRUNUS CISTENA. Purple Leaf Plum. 5-7 ft. Very colorful shrub. Plum-like foliage is deep blood-red while forming, changing to bronzy green; small pink flowers in May. Adds variety and contrast. 18-24 in., each \$1.65; 2-3 ft., each \$2.10; 3-4 ft., each \$2.75.



POTENTILLA FARRERI

POTENTILLA, Farreri. 3 ft. up. Also referred to as *P. Goldrop*. A new shrub that is a "find" among dwarf varieties. Trimly shaped bushes have fairly dense green finely divided foliage which is surmounted by a generous profusion of small bright golden yellow blossoms in June, continuing throughout the summer. Hardy; sun or shade. 9-12 in., each 95c; 12-15 in., each \$1.25; 15-18 in., each \$1.50; 18-24 in., each \$1.75; 2-2½ ft., each \$2.10.

FORSYTHIA

FORSYTHIA, Spectabilis. Golden Bells. 6-8 ft. Upright arching branches bearing many early bright yellow flowers in April. Blossoms best following mild winter and spring. 2-3 ft., each \$1.70; 3-4 ft., each \$2.15; 4-5 ft., each \$2.50.



Choice *NEW* **ROSES**



Twilight Pat. 1434 \$2.75

**Special \$11.25 Value
All New Collection
One Each Ppd. \$10.00**



**Pink Peace
PAF. \$3.00**



**Isobel Harkness
Pat. 1650 \$2.75**

**Aztec
Pat. 1648 \$2.75**



**Extra Value
One Cover Collection
and
One All New Collection
All Seven Ppd. \$18.50**

EVERBLOOMING ROSES

Roses in all their beauty and fragrance can be enjoyed in almost any garden. For best success with Everblooming roses, good fertile soil, several hours daily sunshine and good thrifty planting stock is required. Where soil is poor, it should be replaced with good top soil to a depth of 18 to 24 inches for the rose bed. A six-inch mound of soil or leaves over the crown of the plant is a good means of winter protection. In many localities, climbing roses should be laid down for winter and entirely covered. Hardy Shrub Roses need no protection and are not exacting as to soil.

Our list of roses represents a very careful selection in all colors from a great number of varieties. You will find a number of choice new creations of recent years as well as some of the old favorites that cannot be replaced because of their lasting merits.

Patented Hybrid Tea Roses

Finest Western 2 year Top Size Field Grown. Post Paid Each Rate Only.

ANGEL WINGS (Pat) Large perfect formed creamy flowers, tinged pink. Flowers age gracefully, the pink deepening and suffusing thru the pedals. Vibrant green foliage.

Each \$3.00; 3 or more \$2.65 ea.

AZTEC (Pat) Ovoid buds open to big scarlet-orange blooms; lasting and color-fast. Spreading plant of medium height.

Each \$2.75; 3 or more \$2.50 ea.

CAPISTRANO. (Pat). AARS. Rich shade of deep glowing rose pink both in bud and open flower with practically no fading through life of flower. Large buds and blooms and strong stems. Rich heavy lasting fragrance.

Each \$2.00; 3 or more \$1.80 ea.

CHARLOTTE ARMSTRONG. (Pat.)

AARS. Long slender blood-red to cerise flowers that attract attention in any rose planting.

Each \$2.25; 3 or more \$2.00 ea.

CHRYSLER IMPERIAL. (Pat.) 1953

AARS Winner. Long buds, large high-centered flowers of crimson red. Excellent plants and foliage.

Each \$2.50; 3 or more \$2.25 ea.

FORTY-NINER. (Pat.) AARS. Brilliant

hued bicolor; colors contrast brilliantly, yet combine beautifully. Inside of petals are vivid Orient red, while outside is Chrome-yellow changing to softer yellow. Long beautiful buds.

Each \$2.25; 3 or more \$2.00 ea.

HEARTS DESIRE (Pat.) Long unfurling

petals of pure even shade of luminous red, holding color and shape remarkably well. Exceptionally fragrant; plants vigorous and prolific.

Each \$1.75; 3 or more \$1.60 ea.

HELEN TRAUBEL. (Pat) 1952 AARS

Winner. The color varies somewhat with the weather from a light sparkling pink to lustrous apricot. Its unusual large, long slender buds are magnificent, opening into 4 to 5 inch pleasingly fragrant blossom. Vigorous, robust plants, attractive foliage.

Each \$2.75; 3 or more \$2.50 ea.

ISOBEL HARKNESS (Pat) Lovely, long yellow buds and clear shining yellow flowers on fine stems.

Each \$2.75; 3 or more \$2.50 ea.

KORDES PERFECTA (Pat) A flashing new color, creamy white buds edged with carmine which spreads thruout as the flower opens, to a combination of pink, white and yellow. Vigorous.

Each \$3.50; 3 or more \$3.20 ea.

MIDNIGHT (Pat) Long slender buds open to deep-red flowers shaded black. Long stems and fragrant. Big vigorous plant.

Each \$2.75; 3 or more \$2.50 ea.

MIRANDY (Pat.) Strong plant producing deep maroon red blooms with deeper shading; long pointed oval buds. Beautiful in form and long lasting.

Each \$2.25; 3 or more \$2.00 ea.

MOJAVE (Pat.) 1954 AARS Winner.

Named for California's famous desert, being glowing orange shot with flame-like tones of scarlet, typical of desert sunset. The many long-stemmed, beautiful tapering buds open to big pleasantly fragrant flowers on vigorous plant.

Each \$2.75; 3 or more \$2.50 ea.

NEW YORKER. (Pat.) Buds slowly open into very large flowers of lasting brilliant red shade composed of scarlet with rose red undertones overlaid with rich velvety sheen.

Each \$2.25; 3 or more \$2.00 ea.

PATENTED HYBRID TEA—continued

PEACE. (Pat.) A masterpiece, winning the highest score ever given a new rose in the 1946 All American Rose Award! Greatest charm is in changing panorama of color. Large oval buds are rich gold, edged cerise; as outer petals unfold, the gold changes to canary to pale gold and iridescent cream; cerise edge deepens and becomes broader as flower slowly opens to glorious 5-inch blooms. Everyone should grow this. **Each \$2.50; 3 or more \$2.20 ea.**

PEACE COLLECTION

The collection will include one PEACE rose, which everyone should grow, and one each of the Red, Yellow, Pink and Bicolor of OUR selection from the fine stock and varieties listed under Standard Tea Roses.

\$8.50 catalog value all 5 for \$7.50
Post paid. Order early.

PINK PEACE (Pat) Enormous dusty pink, flowers of beautiful form carried erect on heavy canes. Vigorous, non-fading and fragrant.
Each \$3.00; 3 or more \$2.65 ea.



Fusilier

AMY VANDERBILT (Pat) From bud to open flower the color changes slowly from purple lilac to lavender, heavy clusters.
Each \$2.50; 3 or more \$2.25 ea.

SUTTERS GOLD. (Pat.) AARS 1950.

Beautiful long pointed yellow buds, richly shaded with orange and red. Rich tea fragrance not found in any other yellow. **Each \$2.25; 3 or more \$2.00 ea.**

TIFFANY 1955 AARS Winner (Pat.)

Vigorous upright plant, dark green leaves producing long stems, buds and perfect blooms of a clear pink with a salmon undertone. Very fragrant.
Each \$2.50; 3 or more \$2.25 ea.

TWILIGHT (Pat) Lavender pink pointed buds open slowly to high centered blooms of pastel-lilac. Silvery reverse.
Each \$2.75; 3 or more \$2.50 ea.

WHITE KNIGHT (Pat) 1958 AARS

Winner. Long pointed buds open to a perfectly formed, double, pure white flower on a good stem. Strong upright growers with good foliage.
Each \$3.00; 3 or more \$2.65

BIG FIVE COLLECTION

We again offer the collection that was pictured in our 1958 catalog and received so much popularity. Special Collection includes one each; Peace, Mojave, Sutters Gold, Queen Elizabeth and Chrysler Imperial.

\$12.50 Value all for \$11.00 Ppd.

Patented Floribunda Roses

These will outbloom anything in the rose family all summer long. Very desirable for landscape effect in solid beds, borders or colorful highlights in the foundation planting. Their bushy thrifty growth averages about 24 inches. Profuse and colorful.

Finest Western 2 year Top Size Field Grown. Post Paid Each Rate Only.

CIRCUS. (Pat.) AARS. for 1956. Perfect buds of bright yellow and orange. High centered flowers display ever-changing tones of yellow buff, pink and bright red.
Each \$2.50; 3 or more \$2.25 ea.

FASHION (Pat.) AARS for 1950. Brilliant luminous coral flowers. All season, blooms single and in clusters.
Each \$2.00; 3 or more \$1.80 ea.

FUSILIER (Pat.) 1958 AARS Winner. Rich brilliant orange red. The flat waxy flowers are 3-3½ inches and are produced in heavy clusters. Full bushy plant of medium height with glossy dark green foliage.
Each \$2.50; 3 or more \$2.25 ea.

PATENTED FLORIBUNDA—continued

GOLD CUP (Pat.) 1958 AARS Winner. Large golden yellow non-fading flowers with a sweet pleasing rose fragrance. The plant grows about 2½ ft. tall with very ornamental foliage. Each \$2.50; 3 or more \$2.25

GOLDILOCKS (Pat.) Profuse clusters of golden-yellow double blooms on compact plants. A delightful addition to the yellow Floribundas. Each \$1.75; 3 or more \$1.60 ea.

IVORY FASHION 1959 AARS Winner (Pat) Long slender ivory buds open to 4 inch flowers; long decorative golden stamens, fragrant, long lasting. Each \$2.75; 3 or more \$2.50 ea.

JIMINY CRICKET (1955 AARS Winner) A sparkling new color in Floribundas. A bright apricot-orange. Profuse bloomer on a vigorous, glossy green plant. Each \$2.00; 3 or more \$1.80 ea.

MA PERKINS (Pat.) 1953 AARS Winner. A sparkling new color with rich unusual fragrance. Each delightfully shaped bud deep salmon pink with dash of gold flush of red opens into 2½-3 in. sparkling double, soft coral pink flowers. Each \$2.00; 3 or more \$1.80 ea.

PINOCCHIO. (Pat.) A thrifty plant producing an abundance of pointed buds of salmon-flushed gold opening to miniature hybrid-tea like roses of soft clear pink and in clusters. Each \$1.75; 3 or more \$1.60

RED PINOCCHIO (Pat.) A sport of Pinocchio with darker rich carmine color. Each \$1.75; 3 or more \$1.60 ea.

TOM TOM (Pat.) A 1958 introduction. Beautiful blooms of an unusual shade of (dusky) rose pink. Very uniform compact bushy growth. New growth and foliage a beautiful shade of dark red. Each \$2.50; 3 or more \$2.25 ea.

VOGUE (Pat.) 1952 AARS Winner. A wonderful new floribunda. It is intense cherry coral with well formed 3-4 inch flowers of Hybrid-tea form. The very dark, oval buds open slowly to a delightfully fragrant bloom carried in sprays on a dark foliage. Each \$2.00; 3 or more \$1.80 ea.

WHITE BOUQUET. (Pat.) 1957 AARS Winner. Sparkling white gardenia-like blooms with a sweet spicy fragrance. Contrasting lustrous dark green foliage. Each \$2.50; 3 or more \$2.25 ea.

Grandiflora Roses

A brand new rose class featuring high-center form and long stems of Hybrid Teas and borne in clusters on a taller, more robust plant.

BUCCANEER. (Pat.) A brilliant unfading new yellow with particularly lovely, long slender and tapering buds. Each \$2.50; 3 or more \$2.25 ea.

CARROUSEL (Pat.) Semi double, fragrant, dark red. Profuse bloom. Each \$2.00; 3 or more \$1.80 ea.

MONTEZUMA (Pat) Long tapering buds open to high centered flowers or bright orange scarlet. Each \$2.75; 3 or more \$2.50 ea.

QUEEN ELIZABETH (Pat.) AARS Winner 1955. A delicate clear pink in both bud and high-center open blooms borne in clusters and on single stems. Each \$2.50; 3 or more \$2.25 ea.

STARFIRE 1959 AARS Winner. Glowing currant red high-centered blooms, distinctive fluorescent, non fading. Each \$3.50; 3 or more \$3.20 ea.

Potted Roses

Experience the past few years, by us and other Nurseries, has proven practical and desirable the use of Roses established in containers to supplement the April and early May planting season of dormant bushes. As our patrons become acquainted with the ease of planting Potted Roses and the convenience this innovation in merchandizing affords; we are yearly increasing our offering. We will have numerous alternate varieties in addition to catalog listing for your selection while in bloom from June throughout the summer and fall. "Plant 'Em Growing".

Many of our customers prefer the potted Roses, and place reservation early to assure availability for June or later planting. The potted or "Plant 'Em Growing" Roses are 50c per plant higher than the each rate quoted in this catalog listing.

o - o - o

When the golden summer sunshine
Brings leaf and flower to view,
When the early morning breezes
Waft fragrance fresh with dew,
Then your home becomes a castle;
For your planning and your care
Have peopled its wee kingdom
With things you planted there.

Standard Hybrid Tea Roses



Roses Post Paid at EACH rate only

Finest Western 2 year Top Size Field Grown, Dormant Bushes. Priced each \$1.50; 10 for \$13.50.

CONDESA de SASTAGO. A new variety with rare attractive color. Bears quantities of double flowers; petals are distinctly two-toned, deep coppery pink on inside and golden yellow outside. Vigorous, bushy.

CRIMSON GLORY. Consistently tops among red roses. Large urn-shaped buds open to fragrant flowers of intense, deep vivid crimson shaded with deeper red, and mellowed with soft velvety nap.

EDITOR McFARLAND. Fine shapely buds opening to double balanced flower; color is solid deep brilliant pink; blossoms freely.

ECLIPSE. Bud long-pointed deep gold. Flowers yellow. Foliage leathery. Vigorous.

ETOILE de HOLLAND. Brilliant red blooms of magnificent size, perfect in half-open state, showing clean, attractive centers when open; fragrant.

You will be proud to plant these superior everblooming roses. We have selected only the best varieties that do well in the Plains Region.

The unexcelled quality of our Roses is retained at its peak by our proven storage facilities and specialized well experienced handling.

K. A. VICTORIA. A popular fragrant white. Bears many large creamy white, perfect blooms.

McGREDDY'S IVORY. Fine creamy white fragrant rose that has deep petals of good substance. Pointed buds open to large double blooms.

McGREDDY'S YELLOW. Bright buttercup yellow flowers of good form and substance. Glossy bronzy leaves, reddish stems.

MRS. PIERRE S. DuPONT. Medium sized long-pointed bud of a reddish gold opening to semi-double cupped lasting flower of deep golden yellow.

PICTURE. A picture both in form and color. Beautiful buds open into medium size pink blossoms with warm salmon undertone.

PRES. HERBERT HOOVER. Fragrant flowers. Very charming combination of cerise-pink, flame, scarlet and yellow with pink shade dominant.

TALISMAN. Brilliant red and gold buds, opening to well shaped blooms of glowing yellow stained copper-red and orange-rose on inside petals.

TEXAS CENTENNIAL. (Hoover sport; vigorous. Bright vermilion red with light tone of gold at base. Petals lighter red at center, gradually toning to deep rich pink as bloom ages.

THE DOCTOR. Large beautiful buds expand to enormous blooms of exquisite silvery pink, with intense rose fragrance.

WILL ROGERS. Very dark velvety-crimson maroon; double, free bloomer with dark green foliage.

Standard Floribunda Roses

These are the same as the Patented Floribunda except the patented control of production and price has run out. They are economical and just as effective for landscape planting.

**Finest Western 2 yr. No. 1 Each \$1.50
10 for \$13.50. Ppd. Each rate only.**

ELSE POULSEN. Flowers medium size, semi-double lasting, bright rose pink. Continuous blooming from summer to late fall on erect thrifty plants.

EUTIN. Even strangers will ask you its name. Very striking double rich red flowers produced with Floribunda abundance on vigorous bush.

FLORADORA. AARS. Fascinating Cinnabar color shaded scarlet and geranium red. Double blossoms; vigorous bushes.

IMPROVED LAFAYETTE. Medium sized deep glowing red flowers suffused vivid crimson. Blooms profusely, flowers of rose crimson.

ORANGE TRIUMPH. Salmon red with orange shadings in clusters, foliage glossy-compact, bushy.

SUMMER SNOW. Continuous flowering with large clusters of clear white flowers that almost cover the light green foliage.

Shrub Roses

The shrub roses are generally not ever-blooming in character, but have winter hardy canes that need no covering or cutting back. Very striking when in bloom, and add sparkle to shrub planting.

AUSTRIAN COPPER. The brilliant rose loaded with single bright orange-red blossoms with yellow underside. Very hardy. 5-6 ft. **Two year No. 1 ea. \$1.50.**

GROOTENDORST SUPREME. Deep crimson-red, long lasting flowers in clusters.

Two year No. 1 size, each \$1.35.

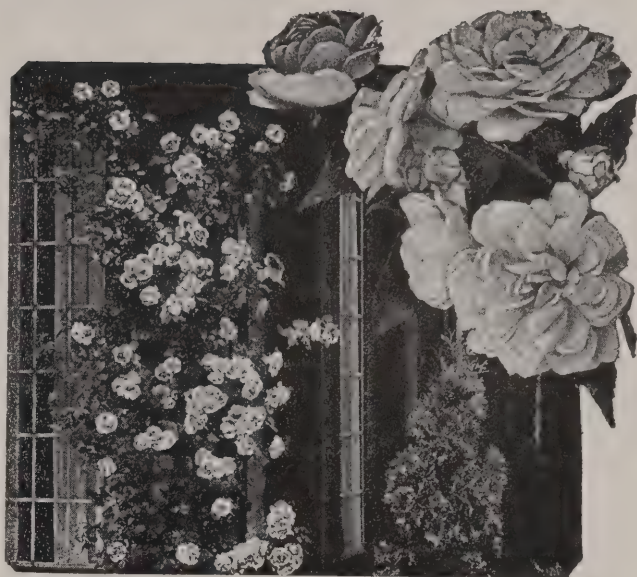
HARRISON'S YELLOW. The charming old favorite hardy 5-6 ft. bush rose bearing a profusion of semi-double bright yellow flowers about Decoration Day. **Two year No. 1 ea. \$1.50**

RED LEAF ROSE, Rosa Rubifolia, 6-8 ft.

Very hardy attractive reddish-violet tinged foliage, starry bright pink blossoms in June followed with showy orange-red berries.

2-3 ft. ea. \$1.35; 3-4 ft. ea. \$1.75

Climbing Roses



Paul's Scarlet

AMERICAN BEAUTY CLIMBER. Large double flowers of rose crimson. **Each \$1.35.**

BLAZE IMPROVED. This improved strain of the ever Popular Blaze climber has same fine foliage and double crimson blooms with the improvement being in its everblooming ability. **Each \$1.50**

DR. J. H. NICHOLAS (Pat.) Everblooming climber or pillar type that has large fully double deep rose pink 5-6 inch wide flowers on long stems. Foliage rich dark green. Judicious fertilizing will encourage progressive growth with the succession of bloom. **Each \$2.00; 3 or more \$1.75 ea.**

DOUBLOOMS. Deep chiffon yellow to gold. Large double flowers. Intermittent blooms Vigorous and hardy. **Each \$1.50**

GOLDEN SHOWERS. (Pat.) 1957 AARS Winner. Climber-pillar, almost thornless, daffodil yellow with long pointed buds, fragrant, 4-5 in. profuse bloom. Vigorous plant. **Each \$2.75; 3 or more \$2.50**

INSPIRATION. Large semi-double fragrant pink. Successive crops of flowers from spring through fall. Very hardy. **Each \$1.50**

PAUL'S SCARLET. For brilliant color this rose is unsurpassed. Produces clusters of semi-double vivid dazzling red blossoms. **Each \$1.35.**

SPECTACULAR (Pat) Everblooming climber. Long lasting, orange-spectrum-red clusters. Glossy foliage. **Each \$2.50; 3 or more \$2.25 ea.**

EVERGREENS

PLANT EVERGREENS FOR SUMMER BEAUTY AND WINTER COLOR

Most important of all is the warm, green cheerfulness of varied foliage textures in the winter landscape when other ornamentals are without foliage or flowers. Summer and winter, Evergreens give an air of friendliness and distinction to any planting.

Careful skill is devoted to digging our Evergreens with an ample ball of earth to give assurance of continued successful growth.



Scopulorum Juniper

Upright Junipers

These are the pyramidal Evergreens very frequently planted close to buildings, along with low evergreens and shrubs. The outline and height can be influenced by shearing.

The following distinct and beautiful named varieties have each originated from an outstanding specimen parent tree selected from among thousands and grafted from the original parent stock. These grafted trees then have characteristics identical with the parent tree and with each other. Thus it is possible to have exactly matched trees in growth habit and appearance either in pairs or any multiple. The illustration of Moffetti Juniper is typical of *J. Scopulorum* growth habit.

Grafted Junipers

SCOPULORUM JUNIPER or Colorado

Silver Juniper. This is the hardy western upright variety. Growth conical and densely branched; foliage of pleasing and varying texture and color. Being seedlings, there is a variation in color from green to greenish-silver from tree to tree making it very difficult to match pairs. Seedlings are just as desirable and useful as the Grafted varieties if matched growth characteristics are not an important factor. In ordering, give preference in color; Green — Greenish blue — Greenish silver.

5-5½ ft. each	\$18.00
4½-5 ft. each	16.25
4-4½ ft. each	14.50
3½-4 ft. each	12.75
3-3½ ft. each	11.00
2½-3 ft. each	9.00

Alternate Upright Juniper varieties and sizes available. Inquire at Nursery.

BLUE HAVEN. Scopulorum Juniper.

One of the bluest with a little heavier foliage. Trimmed periodically it is one of the most attractive uprights with more resistance to winter injury. Sizes 1, 2, 3.

CANNART JUNIPER. Foliage distinctive rich, deep green and usually displays numerous silvery-blue berries when well established. Size 1, 2, 3, 4.

KETLEERI JUNIPER. Deep green foliage. Compact grower and very formal in outline. Always a good juniper. Upright grower. Size 2, 3, 4.

MOFFETTI Scopulorum Juniper. One of the best. Upright pyramidal habit of growth; compact and shapely with very little trimming. Attractive greenish silver color. Size 1, 2, 3, 4.

SUTHERLAND Scopulorum Juniper.

Has a natural full-bodied habit of growth, compact with very little trimming. Medium to dark green in color. Size 2, 3, 4.

GRAFTED JUNIPERS		Price Each
Size 1	4-4½ ft.	\$15.75
Size 2	3½-4 ft.	13.75
Size 3	3-3½ ft.	11.50
Size 4	2½-3 ft.	9.50

Low Growing Junipers

For Foundations and Border Planting

Junipers are quite an asset to the winter landscape in the Plains Region where most shrubs are without foliage for approximately six months. In addition to their incomparable value in foundation plantings they make beautiful low informal and sheared evergreen hedges.

Low growing evergreens are measured by the average diameter of their spread and may be furnished in container-established stock or balled and burlaped (B & B) from field.

For additional varieties of low growing Evergreens and alternate sizes available, inquire at the Nursery.

ANDORA Juniper. A horizontal Juniper with grayish-green foliage turning to reddish purple in early winter making a fine cover 8-10 in. high.
15-18 in. ea. \$7.50; 18-24 in. ea. \$8.50

HETZII Juniper. Very similar to the popular Pfitzer Juniper with a little taller growth habit and distinctive Silver-blue in color. 15-18 in. ea. \$5.95
18-24 in. ea. \$7.50; 2-2½ ft. ea. \$9.00;
2½-3 ft. ea. \$11.25; 3-3½ ft. ea. \$13.50.

PFITZER JUNIPER. A low spreading Juniper, one of the best; foliage attractive blue-green or soft mossy appearance. Note picture page 21.
15-18 in. ea. \$5.95; 18-24 in. ea. \$7.50
2-2½ ft. ea. \$9.00; 2½-3 ft. ea. \$11.25
3-3½ ft. ea. \$13.50

SABINA JUNIPER. Low growing type with numerous upright fan - shaped branches, with tufted dark green foliage.
15-18 in. ea. \$5.75; 18-24 in. ea. \$7.25
2-2½ ft. ea. \$8.75; 2½-3 ft. ea. \$11.00

TAMARISCIFOLIA JUNIPER. Dwarf low growing Juniper that ranks as one of the neatest, most attractive in cultivation. A green color that is softened by a blue tone in a densely patterned growth. Little change in color, summer to winter. Also has possibilities for "planter box" planting. Note picture page 21.
15-18 in. ea. \$7.50; 18-24 in. ea. \$8.50;
2-2½ ft. ea. \$10.00; 2½-3 ft. ea. \$12.25.

LOW-GROWING PINE

MUGHO-PINE. The popular low-growing compact pine that fits in so well in foundation plantings, as specimens or in groups.
Size given in spread:
15-18 in. ea. \$10.00; 18-24 in. ea. \$12.50

Baby Evergreens

These are the same varieties as described, three times transplanted, well-rooted and branched. If immediate effect is not too important they may be quite useful in foundation planting, informal Evergreen hedges and borders or groups. All established in containers. Add 25c each for crating on all express shipments.

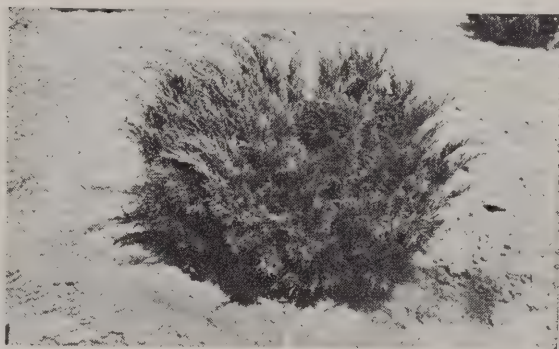
ANDORA JUNIPER. Well shaped plants 9 to 12 in. spread.

HETZII JUNIPER. Nice plants 12 to 15 in. spread. Fine for starting hedge.

MAHONIA. Oregon grape. 6 to 9 inch plants.

PONDEROSA PINE. Average 15-18 in. tall, branched and nicely started.

PFITZER JUNIPER. Nice plants 12 to 15 in. spread.



Sabina Juniper

SABINA JUNIPER. Average 9 to 12 inch spread, densely branched.

TAMARISCIFOLIA. Well shaped plants 9 to 12 inch spread. Fine in planters.

COLO. BLUE SPRUCE. 9-12 in. Well branched, average blue to green.

Above price alike

Each	Per 3	Per 10	Per 25
\$2.50	\$7.00	\$22.50	\$52.50

COLO. BLUE SPRUCE. 9-12 in. Select blue and 12-15 in. Average Blue.
Each \$3.50; per 10 \$32.00

"PLANT 'EM GROWING"

Complete foundation plantings may be installed on the hottest summer day using our container established Evergreens and Shrubs, with no danger of losing a plant; thus, making it no longer necessary to wait from June until the next spring to plant landscape improvements.

We are continually expanding our offering of container established Evergreens to include alternate varieties and sizes in addition to these listed in our catalog.

Pines



Austrian Pine

AUSTRIAN PINE. 40-50 ft. A fine background tree having very good density and color, long rich green needles. Not as growth and wind resistant as Ponderosa but in urban areas develops into a more shapely ornamental.

2½-3 ft. ea. \$11.00; 3-3½ ft. ea. \$13.00
 3½-4 ft. ea. \$15.25; 4-4½ ft. ea. \$16.50
 4½-5 ft. ea. \$18.25; 5-5½ ft. ea. \$20.00

PONDEROSA. (Bull or Western Yellow Pine.) A native pine with long glaucous needles. Develops into beautiful pyramidal tree. Stands almost unlimited drought. Grows about 12 inches a year. Ultimate height 50-60 ft. Growth and appearance very similar to the Austrian Pine illustrated above. Also see Baby Evergreens. (Price below).

PINON PINE. A slow-growing choice variety. Low round-headed tree, branching from ground. Short foliage of rich warm green, produces delicious edible nuts. Make beautiful specimen trees or ideal tall informal evergreer screens.

Ponderosa & Pinon Pine:

Prices

2-2½ ft. each \$ 7.75
 2½-3 ft. each 9.50
 3-3½ ft. each 11.25
 3½-4 ft. each 13.25
 4-4½ ft. each 15.00
 4½-5 ft. each 17.00

Larger sizes priced on selection.

Spruce

COLORADO BLUE SPRUCE. This is one of the choicest and most beautiful of all evergreens with its symmetrical pyramidal form and color. It is exceptionally well adjusted for wide range of planting and is one of the hardiest.

There is a natural color variation of trees of this species even in seedlings from the same parent tree, and these we classify as Select Blue, Average Blue, and Green color types. Aside from color there is no difference in groups, the contrast between the blues and greens make pleasing combinations. Rate of growth 6 to 12 inches or more per year.

SELECT BLUE TYPE

2-2½ ft. ea. \$13.00; 2½-3 ft. \$16.25
 3-3½ ft. 19.50; 3½-4 ft. 22.75
 4-4½ ft. 26.00; 4½-5 ft. 29.25
 5-5½ ft. 32.50; 5½-6 ft. 33.75

AVERAGE BLUE TYPE

2 to 2½ ft. ea. \$10.00; 2½ to 3 ft. \$12.50
 3 to 3½ ft. \$15.00; 3½ to 4 ft. \$17.50
 4 to 4½ ft. \$20.00; 4½ to 5 ft. \$22.50
 5 to 5½ ft. \$25.00; 5½ to 6 ft. \$27.50

GREEN TYPE

2-2½ ft. ea. \$ 8.00; 2½-3 ft. \$10.00
 3-3½ ft. 12.00; 3½-4 ft. 14.00
 4-4½ ft. 16.00; 4½-5 ft. 18.00

Larger spruce or exceptions to average color or conformation priced according to value upon application or by personal selection. (Special crating if required charged at cost).

Alternate size available in some groups. Inquire at Nursery.



Field Photograph



PLANT EVERGREENS

**To Give Your Garden That Lively
Look The Year Around**

Modern Landscaping Has Given
Evergreens a Very Important Place
in Home Beautification

PFITZER JUNIPER. A low spreading Juniper, one of the best; foliage attractive blue-green or soft mossy appearance. 18-24 in., each \$7.50; 2-2½ ft., each \$9.00; 2½-3 ft., each \$11.25; 3-3½ ft., each \$13.50.

MOFFETTI Scopulorum Juniper. One of the best. Upright pyramidal habit of growth; compact and shapely with very little trimming. Attractive greenish silver color.

	Each
4 -4½ ft.	\$15.75
3½-4 ft.	13.75
3 -3½ ft.	11.50
2½-3 ft.	9.50



TAMARISCIFOLIA JUNIPER—Page 19

For additional varieties, page 18

**Colorado Blue Spruce
Colorado's State Tree**

See opposite page for listing





THORNLESS HONEYLOCUST

This and the patented Moraine selection are recommended as the outstanding trees for general planting.



SCHWEDLER MAPLE

A beautiful asset to every landscape planting.

HACKBERRY

One of the most rugged trees we have for home planting. (22)

SOFT MAPLE

Well suited where a large tree or quick shade is desired.



SHADE and ORNAMENTAL TREES

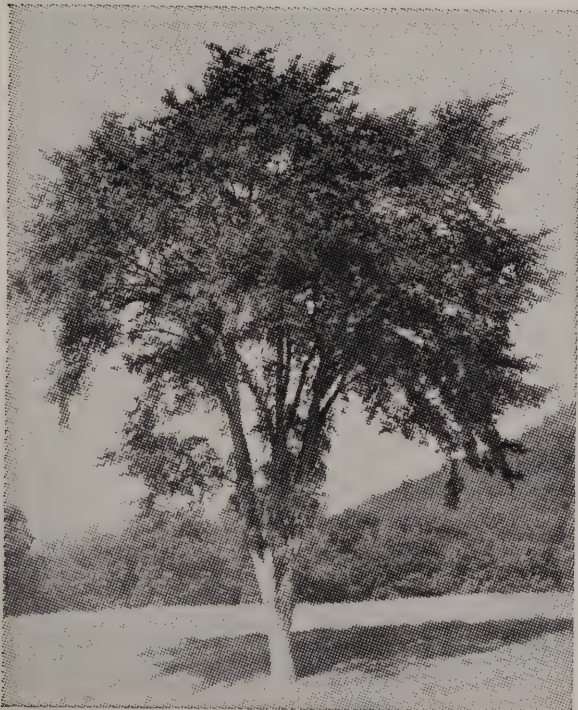
Beauty and comfort, by climate control, are gained by planting trees. Modern insulation and air conditioning may give perfect control of the indoor living quarters; but more well chosen properly placed trees should be planted to improve our comfort and enjoyment of the outdoor living area, particularly in the treeless new Suburban developments.

The following are outstanding varieties that offer selection of desirable trees to plant for background, framing, shade, ornamental specimens and screens.

ASH, Green Ash. 40 to 50 ft. One of the most popular shade tree in dry, cold climate. Makes a round headed tree with attractive green foliage.

BIRCH, Cut Leaved Weeping. 30 to 40 ft. A very graceful and attractive tree with drooping limbs and delicately cut foliage; silvery white bark. Well branched trees.

BIRCH, European White. 20-30 ft. This is a graceful white barked tree of the upright form. We offer this tree also in clump form, containing three or more stems at or near the ground level.



American Elm

ELM, American. 40 to 60 ft. The popular, gracefully branched, beautiful, noble American tree planted extensively in parkings and general landscape. Moderate grower much less subject to breakage than other Elms.

ELM, Chinese. 40 to 50 ft. An extremely rapid grower, slender wiry, graceful branches with dense foliage over a long season. The remarkable growth with limited moisture and attractiveness have made it a favorite in the Great Plains region, particularly in arid areas.

ELM, Dropmore. 40 to 50 ft. Small leafed Elm imported from Manchuria. Very similar to Chinese Elm, slightly slower growth, setting foliage about two weeks later and dropping leaves about two weeks earlier, thus avoiding snow breakage, more resistant to wind damage and winter injury.

ELM, Hybrid. 40-50 ft. Hybrid of American and Chinese elm, rapid growth with large dark green leaves.

HACKBERRY. 40 to 50 ft. Habit of growth is very similar to American Elm. Branches are strong and wiry; tree is remarkably free from insects and disease. A very durable and sturdy tree.

HAWTHORN, Washington. 18-20 ft. Beautiful ornamental tree, creamy-white flowers in large clusters followed by small coral-red fruit. Brilliant autumn foliage.

HONEYLOCUST, Thornless. 50 ft. We recommend this as possibly the outstanding tree for general planting in the west central plains. Grows in most western soils; rather drouth resistant, and above average in freedom from insect pests and diseases. Has attractive pinnate or fernlike foliage and branches are not subject to snow breakage. Rate of growth moderate; does not sucker.

HONEYLOCUST, Thorney. Same as above except for having thorns.

LINDEN, American. 50 ft. A pleasing tree that could well be planted more extensively in many localities. Of moderate growth, rounded to pyramidal in shape; large heart-shaped leaves; fragrant blossoms.

MAPLE, Hard or Sugar. 40 to 50 ft. A slow growing ornamental. Foliage turning bright orange to scarlet in fall.

MAPLE, Norway. 40 to 50 ft. Beautiful slow growing, closely related to Schwedler Maple (Pictured) with rich green foliage.

MAPLE, Schwedler, Purple or Red Leaf Maple. 40-50 ft. One of the most attractive Maples in cultivation. As the broad leaves unfold and develop in the spring, the tree is a mass of reddish purple foliage maturing to a dark bronzy green.

TREES—continued

MAPLE, Soft. 60 to 80 ft. The fastest growing and largest of the maples. Leaves silvery underneath. This tree is often incorrectly confused with the Silver Poplar which is inclined to sucker.

MORaine LOCUST, (Pat. 836) 60 to 80 ft. A new completely thornless, podless improved Honeylocust with round head when young but tall and vase-shaped when older.

MOUNTAIN ASH, European. 20-30 ft. Nicely proportioned ornamental tree with rich green fern-like foliage; bears clusters of white blossoms in late spring succeeded by highly ornamental orange-red berries in fall.

POPLAR, Accuminata, Cottonless Cottonwood. 40 to 50 ft. A northern selection with narrower leaves and more shapely growth.

POPLAR, Bolleana. 60 to 80 ft. Beautiful fast growing spire-like, silvery bark and lined, maple shaped leaves.

POPLAR Lombardy. 50-60 ft. Very rapid, narrow spire-like growth. Branches grow upright close to trunk; leaves green with broad, solid outline. Used for tall screens—formal planting.

POPLAR, Sargenti. Cottonless Cottonwood. 50 to 60 ft. This is the regular Western Broadleaf Cottonwood that has been propagated from infertile trees and will not bear cotton; noted for hardiness.

POPLAR, Silver. 50 to 70 ft. Hardy rugged smooth light bark, leaves dark green on top, silvery beneath, rapid growing shade tree.

RUSSIAN OLIVE. 20 to 25 ft. One of the hardier trees. Has narrow silvery foliage and stems; small very fragrant blossoms. Fine for specimens, screens and hedges.

WILLOW. Niobe Weeping. 30-50 ft. Has very attractive golden bark and long, pendulous branches; beautiful in summer and of striking winter appearance.

SHADE TREES

SIZE AVAILABLE AND PRICE LISTING

Trees are generally graded in height up to 8 to 10 ft., next larger grade being 1 1/4 to 1 1/2 inch trunk caliper with height becoming of secondary importance. 2 to 2 1/2 inch tree averages about 12 to 14 ft. tall, all well branched.

	Sized by height			Sized by caliper range 10 to 16 ft. tall				
	5-6'	6-8'	8-10'	1 1/4"	1 1/2"	1 3/4"	2"	2 1/2"
Ash Green	2.50	4.25	5.75	6.95	8.75	10.25	12.50	14.75
†Birch, Cutleaf Weeping		6.50	7.15	9.00	(30.00 B&B)			
Birch, White Clumps .		6.25						
Birch, White	3.85							
Elm, American		2.75	4.25	5.75	8.25	10.00	12.50	15.75
Elm, Chinese	1.75	2.50	3.50	5.00	7.50		9.75	12.25
Elm, Dropmore	1.95	2.75	3.75					
Elm, Hybrid		5.50	7.75	9.75				
Hackberry	3.25	5.25	6.95	8.75	11.25	14.25		
Hawthorn, Washington.		6.25						
Honeylocust, Thornless	4.25	6.25	8.25	10.75	12.50	14.85	16.75	19.75
Honeylocust, Thorny .	2.50	3.75	4.75	5.95	7.50	8.75	10.50	
Linden, American		6.25		8.25	10.00	12.50		
*Locust, Moraine		10.00	12.50					
Maple, Hard			10.50					
Maple, Norway		5.25	8.75					
*Maple, Schwedler			8.75					
Maple, Soft		3.50	5.25	7.00	9.75	12.50		
Mountain Ash		5.25	6.95	8.25				
Poplar, Accuminata ..	1.65	2.75	3.75	4.95	6.25		8.25	
Poplar, Bolleana		2.75	3.75	4.95	6.25			
Poplar, Lombardy	1.25	1.50	1.95	2.50	3.00			
Poplar, Sargenti			3.50	4.35	5.75		7.50	11.25
Poplar, Silver	2.25	2.85	3.75					
Russian Olive	3.15							
Willow, Weeping		3.15	4.50	5.75	8.50		10.95	

*We also have Schwedler Maple 8-9' whip \$5.75 and Moraine Locust 6-7' Branched \$7.50

†We have larger Birch priced B&B. Inquire at nursery.

Climbing Vines



Jackmanni

CLEMATIS. One of the most beautiful 10 to 12 ft. vines grown. Very popular due to their beautiful large purple red, blue, or white flowers in July.

CLEMATIS JACKMANNI. Most popular and vigorous Clematis opening flowers from 4 to 6 inches across: rich velvety purple.

CLEMATIS CRIMSON STAR — Flowers large bright velvety red.

CLEMATIS HENRYI—Flowers large creamy white.

CLEMATIS RAMONA—Flowers large light blue.

Priced: 2 yr. field grown \$1.95; 3 for \$5.50 Ppd.

ENGLEMAN IVY. 30 to 40 ft. Neat, hardy self-climber on brick or stone walls; brilliant autumn colors. Rapid growing, very hardy and dependable.

GRAPE Beta. The most dependable hardy grape for covering arbors and fences.

HONEYSUCKLE, Gold Flame. 15-20 ft. Blooms all summer. The showy flowers borne in clusters are red outside and a golden yellow inside. Very fragrant.

HONEYSUCKLE, Scarlet Trumpet. 15-20 ft. Desirable vine with red tubular flowers over rather long period during summer. Has rich dark foliage remaining late in fall.

SILVER LACE VINE. 20 to 25 ft. Very rapid growing vine with fresh green foliage decorated with clouds of fragrant, foaming white flowers from July on.

CLIMBING ROSES are an ever popular subject for trellises. Our climbing roses are listed under "Climbing Roses."

2 yr. No. 1 Plants — Post Paid	Each	Per 3
ENGLEMAN IVY	\$1.20	\$3.50
GRAPE Beta60	1.65
HONEYSUCKLE, Gold Flame	1.25	3.65
HONEYSUCKLE, Scarlet Trumpet	1.10	3.00
SILVER LACE VINE	1.25	3.65

CONTAINER-ESTABLISHED MATERIAL

This method of handling Nursery stock is rapidly becoming popular in the Plains Region by virtue of the very successful results obtained by home gardeners. Not only offering the home owner an opportunity to make successful planting throughout the summer, container - established materials also provide personal selection of incidental items or the selection of a complete landscape planting from stock growing in full leaf or bloom. Our summer supplementary catalog, available in May, will list many items in addition to those described in this catalog.

Soil used in establishing our stock is specially prepared and carefully formulated to provide ample humus and fertility to insure healthy growth. With simple planting requirements, as illustrated below, and reasonable growing conditions, successful continued growth without wilt or loss of bloom may be expected.

FIBER CONTAINERS ARE EASILY REMOVED BY SPLITTING SIDES WITH POCKET KNIFE. METAL CONTAINERS ARE SPLIT DOWN TWO SIDES BEFORE LEAVING NURSERY.

METAL CONTAINERS ARE REMOVED BY LOOSENING SIDES & BENDING AWAY FROM ROOT BALL. REMOVE PLANT BY LIFTING BALL WITHOUT BREAKING UP SOIL.



1. DIG & TEST HOLE SIZE & DEPTH BEFORE REMOVING CONTAINER. BE SURE GRAFT ON ROSES IS LOCATED ABOUT 2" BELOW SURFACE

2. REMOVE CONTAINER CAREFULLY & SET PLANT IN HOLE.

3. FILL AROUND BALL WITH GOOD SOIL GENTLY & FIRMLY PACKED.

4. LEAVE SOME SPACE TO HOLD WATER & SOAK THOROUGHLY.

5. AFTER WATER SEEPS AWAY, FINISH FILLING WITH SOIL.



CAUTION: DO NOT BREAK OR CRUMBLE SOIL ROOT BALL!



HARDY GARDEN CHRYSANTHEMUMS

AN ADDED MONTH OF FLOWERS NOW MAKES INDIAN
SUMMER A MOST COLORFUL SEASON OF
CHRYSANTHEMUMS

The varieties here listed have consistently reached mature blooming season here at Loveland where the first light frosts are expected about Sept. 21, and hard frosts conclude the mum season about Oct. 21. Chrysanthemums are resistant to light frosts. The Cheyenne, Wyo., Horticultural field Station (6,100 ft. alt.) has grown many of these varieties and introduced the following varieties indicated at U.S.D.A. We suggest varieties according to altitude as follows: from 6,500 to 8,000 ft. — Roza, Pink, Bronze and Yellow Cushion, White Gull, Pygmy

Gold, Manantico; from 5,500 to 6,500 ft. — most any variety blooming in September or earlier; less than 5,500 ft. — all varieties in this list.

Height of plants when in bloom is stated after each variety. This is for comparison and will vary depending on location, soil, watering. Plants usually grow a little taller the second year. Chrysanthemum plants usually take until May 1st to establish sufficient growth before transplanting. **Priced Postpaid.**

CUSHION TYPE MUMS

Make low plants, broader than tall, covered with solid mass of flowers in full bloom.

ARIKARA (12-14 in.) U.S.D.A. Reddish-bronze with 2½-3 in. semi double flowers borne in profusion. Early Sept. Each 60c; 3 for \$1.50

BRONZE CUSHION. A "cushion of flowers in masses from August into Oct.," broad dwarf mounds 12 to 16 inches high completely covered with masses of deep bronze turning to copper yellow. Each 60c; 3 for 1.50

CODY (8-10 in.) A very dwarf large flowering lavender with a cream center. Less than 12 in. high. Late Aug. Each 60c; 3 for \$1.50

CRIMSON QUEEN (10-14 in.) Double red 2 in. blooms ageing bronze red on dwarf mound-like plant August. Each 60c; 3 for \$1.50

EARLY GOLD (15 in.) Very early. Bright golden yellow pompon with contrasting dark green foliage. Much more colorful than Yellow Cushion. Late August. Each 60c; 3 for \$1.50.

FLICKA (15 in.) U.S.D.A. Mid-Sept. Flowers are an interesting bronze with rose tints; shape pompon-like, almost entirely double. Each 60c; 3 for \$1.50

GOLDEN MOUND. (16 in.) A mound of golden yellow 1½ to 2 in. fully double flowers. September. Each 60c; 3 for \$1.50

HARVEST BRONZE (15 in.) A rich apricot bronze with a gold undertone. Large 3 in. flowers on a low plant. Each 70c; 3 for \$1.75

HIDATSA (12-14 in.) U.S.D.A. Really red, double compact 1½ inch blossoms on a dwarf cushion plant. Full bloom in Sept. Each 60c; 3 for \$1.50

NANOOK (14 in.) Compact mound completely smothered by large double white flowers with cream center. Early Sept. Each 60c; 3 for \$1.50

POWDER PUFF (12-15 in.) A new white cushion with 2 inch double open faced blooms produced in typical cushion-type. Late Sept. Each 60c; 3 for \$1.50

ROZA (1952 U.S.D.A. Introduction) (14-16 in.) Standard cushion type. Semi-double 1¾ in. flowers of intriguing shade between rose and lavender. Late August. A much better plant and color than Pink Cushion. Each 60c; 3 for \$1.50

WHITE GULL. Baby Pompon of compact low growth producing quantities of small rounded one-inch white button mums. August. Each 60c; 3 for \$1.50

YELLOW CUSHION. Same type and habit as "Bronze Cushion," but yellow flowers. Each 60c; 3 for \$1.50

SEMI-DWARF AND LARGER CUSHION

ADORABLE (16-18 in.) This new pink has everything, large flower, early and dependable clear bright rose pink with salmon reverse. **Each 70c; 3 for \$1.75**

APACHE. (18 in.) Large, shaggy, golden bronze 3 to 4 inch double blooms with curled petals. Late September. **Each 70; 3 for \$1.75**

ARAPAHOE (16 in.) USDA. 2 in. semi-double indescribable colors, being a blend of bronze, yellow and reddish orange. Early Sept. **Each 60c; 3 for \$1.50**

AVALANCHE (18 in.) Very popular large white cream center. Sept. **Each 60c; 3 for \$1.50**

CECILIA (18 in.) Soft deep peony-purple. Petals incurved maturing recurved. Outstanding medium border. Sept. **Each 70c; 3 for \$1.75**

CREAM AVALANCHE (18-20) **Kroh Bros. introduction for 1952!** A very lovely Avalanche sport. Early large fluffy rich cream colored 4 in. blossoms, Mid. Sept. **Each 70c; 3 for \$1.75**

DELUXE RED CUSHION (18 in.) Has "Azaleamum" type of double blossoms and mound-like growth habit; slightly more robust in size. Color definite red. Early Oct. **Each 60c; 3 for \$1.50**

DR. LONGLEY (18 in.) New Longley origination. Fully double, large bright rose-pink. One of the more popular varieties among our visitors. Early Sept. **Each 60c; 3 for \$1.50**

EDNA ROWLEY (18-20 in.) Lavender pink, ruby centered pompom flowers cover this mound shaped plant. Excellent for cut flowers. Early Oct. **Each 70c; 3 for \$1.75**

JOAN HELEN (18-20 in.) Semi-double sparkling garnet-lake shading to purple; bright yellow center. Sept. **Each 60c; 3 for \$1.50**

LIPSTICK (16-18 in.) A grand, bright mound of sparkling crimson-red double flowers on a compact plant with very good foliage. Late Sept. **Each 70c; 3 for \$1.75**

LORENZO (18-20 in.) Double rich dark Dianthus purple. Quilled petals. Early Sept. **Each 60c; 3 for \$1.50**

MANANTICO (16 in.) USDA. Single 2¼ in. flowers. Shoenfeld purple on inside, rosoline pink on back side; bright yellow disc. **Each 60c; 3 for \$1.50**

ORCHID HELEN (15 in.) 2½ in. apricot toned rose-pink. The best of the pastel colors. Sept. **Ea. 60c; 3 for \$1.50**

ORSONA (18-20 in.) Red bronze decorative bushy cushion growth habit, good foliage covered with 2 double blossoms. Early Oct. **Each 70c; 3 for \$1.75**

PATHFINDER (18 in.) A new distinct carnation type bloom of rich golden-yellow. **Each 60c; 3 for \$1.50**

PLAINSMAN (18 in.) Flower and plant same as Pathfinder. Color a rich bronze again to a lighter bronze-yellow. **Each 60c; 3 for \$1.50.**

PYGMY GOLD (15 in.) A dwarf pompon with steady succession of 1 inch golden yellow blooms from August till hard frosts. **Each 60c; 3 for \$1.50**

SALUTE (18 in.) A striking rich purple that certainly attracts the attention of all our visitors. Late Sept. **Each 60c; 3 for \$1.50**

SANTA CLAUS (24 in.) Broad mound bearing rich red blossoms. Flowers large, 2½ in., almost double. Very showy. Late Sept. **Ea. 60c; 3 for \$1.50**

SEPT. BRONZE (15 in.) The warm bronze and golden bronze tints of Autumn are beautifully reflected in 1½ inch pompom. **Each 60c; 3 for \$1.50**

SONIA (16 in.) USDA Unusual color of rich purple; quantities of 2 in double blooms quite showy. **Each 60c; 3 for \$1.50**

VIOLET (18-20 in.) The best early purple. Full, dahlia-like bloom on thrifty plants. Late August. **Each 60c; 3 for \$1.50.**

INTERMEDIATE AND TALLER

AGLOW (24 in.) A brilliant new pompon of pure orange-peel orange. Quilled petals. Sept **Each 70c; 3 for \$1.75**

ASPEN GOLD (26 in.) **Kroh Bros.** 1948. Opening semi-double 2½ in. blossoms, golden yellow blend - orange Shades. Sept. **Each 60c; 3 for \$1.50**

AUTUMN RAY. **Kroh Bros. introduction 1951.** (18 in.) A very prolific, 1½ in. pompon yellow flowers, first with slight orange bronze shading, maturing to lemon yellow. Late Sept. **Each 60c; 3 for \$1.50**

CHIPPEWA (22 in.) Minnesota introduction of striking aster like purple. 2¾ in. blooms. Double to semi-double. Sept. **Each 60c; 3 for \$1.50**

CHRIS COLUMBUS (24 in.) Shapely double two inch blooms of uniform petalage nicely displayed. Color ivory white. Late Sept. **Each 60c; 3 for \$1.50**

CROWNING GLORY (22 in.) Double extra large rich bronze-gold borne on strong nicely foliaged plant. Late Sept. **Each 70c; 3 for \$1.75**

TALLER MUMS—Continued

GEORGE LUXTON (24 in.) Early full double, wide petaled, soft bronze flower of 3½ in. on excellent plant. Sept. Each 70c; 3 for \$1.75

HARBINGER (20 in.) Deep primrose yellow, bronze shadings; 2½ in. double. Late Sept. Each 60c; 3 for \$1.50

HEATHER BLOOM. (20 in.) Very double; heather pink, center shaded rose-red with gold tip. Early Oct. Each 60c; 3 for \$1.50

HILITE (24 in.) Fine large dahlia-like dom-shaped flowers of strong clean yellow. Each 70c; 3 for \$1.75

HOLIDAY (22 in.) Strong plant with an abundance of bronze-gold flowers, pure bronze center. Late Sept. Each 60c; 3 for \$1.50

LADY'S CHOICE (28 in.) A full double 4 in. pastel, which could be described as pink-ivory. Fine for arrangements. Late Sept. Each 70c; 3 for \$1.75

MALINDA BROWN (22 in.) Extra large free flowering incurved broad petaled. Each 70c; 3 for \$1.75

MURIEL RICE (26 in.) Full double 4 in. flowers of light primrose yellow aging to deep cream early in the season, late season picks up a lavender tint much like Peace Rose. Late Sept. Each 70c; 3 for \$1.75

OGALLALA. (24 in.) USDA. Buds open a deep red, 1½ in. semi-double, flowers graduating to rosy bronze, yellow disc. Sept. Each 60c; 3 for \$1.50

RED VELVET (24 in.) Admirable new double mum of rich velvety crimson freely produced on upright plants. Early October. Each 60c; 3 for \$1.50

SEPT. DAWN (24 in.) A bright lively 2¾ in. double pink retaining color over long period. Late Sept. Each 60c; 3 for \$1.50

SIMBA. (22 in.) Fully double 2-3 in. bronzy-yellow, good deep green foliage. Sept. Each 60c; 3 for \$1.50

WHITE CLOUD (22 in.) Large double feathery pure white. Fine for cutting. late Sept. Each 70c; 3 for \$1.75

W. P. SNYDER (20-22 in.) Large shaggy bronze yellow with outer edge petals tinged lavender. Sept. Each 60c; 3 for \$1.50

YELLOW CHRIS COLUMBUS (22 in.) Shapely double 2 inch lemon yellow blooms of uniform petalage nicely displayed. Late Sept. Each 60c; 3 for \$1.50.

SPOON TYPE

These are unique in their tubular petals, the outer tips of which open into a cupped spoon shape.

ORCHID SPOON (24 in.) Spoon type of very charming intriguing effect in a double orchid-pink flower. Sept. to early Oct. Each 60c; 3 for \$1.50

SNOWSPOON (20 in.) One of the finest new spoons. Large shasta-daisy-like double pure white with gold center. Extremely free flowering. Late Sept. Each 70c; 3 for \$1.75

SULPHUR SPOON (22 in.) Three layers of flat spoon shaped petals mimosa to sulphur-yellow center. Mid Sept. Each 70c; 3 for \$1.75

ENGLISH TYPE

This new strain has flowers that average much larger than the majority of the hardy garden varieties. By disbudding all but the main blossoms, maximum size can be attained.

ALABASTER (24 in.) Large white-blossoms slightly incurved; 4 to 5 in. blooms without disbudding. Each 60c; 3 for \$1.50

BRONZE FREDA (20 in.) Large 3-4 in. broad petaled compact burnt-orange maturing in rust orange. Sept. Each 60c; 3 for \$1.50

DAILY EXPRESS (22 in.) Opens as an orange-bronze-red shade maturing to soft glowing orange-yellow with yellow glow in center; 3½-4 in. blooms without disbudding. Each 70c; 3 for \$1.75

GOLD ALABASTER (24 in.) A 1955 USDA introduction. A rich golden yellow version of the well known and popular Alabaster. Very large double incurved blooms. Sept. Each 70c; 3 for \$1.75

GOLD STANDARD (28 in.) Fine deep yellow with slightly incurved petals, 4-5 in. blooms without disbudding. Late Sept. Each 70c; 3 for \$1.75

MRS. E. PATTIE (20 in.) Interesting shade of terra-cotta red with gold reverse; rather broad incurving petals. Attains about 3½ in. size without disbudding. Late Sept. Each 70c; 3 for \$1.75

REVELLER (22 in.) Striking 3 in. blossoms of glowing orange-red with gold center. Late Sept. Each 60c; 3 for \$1.50

"PLANT 'EM GROWING"

We will have an almost complete selection of our Chrysanthemums established in containers on display at the Nursery during the summer and fall. Selection may be made during the summer from illustrations at the office or from the plants in bud or bloom in fall.

PERENNIALS

ONCE PLANTED WILL CONTINUE TO BLOOM YEAR AFTER YEAR

Most Perennials require an open, sunny situation to thrive and show at their best. Soil should be well drained rich garden loam, and enriched each year with an application of well-rotted manure used as a mulch in the fall. Apply the mulch after the ground is frozen.

Prices of Perennials, unless otherwise indicated, 60c each; 3 alike for \$1.50; 6 alike for \$2.85; 12 alike for \$5.50. Post Paid.



Bleeding Heart

BABY BREATH, Bristol Fairy. (2 ft.) Large panicles, purest white double flowers. 2 yr. No. 1. Each \$1.10

BLEEDING HEART. Popular pink heart shaped flowers on arching stems. 5-8 eye roots. Each \$1.10.

COLUMBINE, Mrs. Scott Elliott Hybrids. (2 ft.) Beautiful variety of pastel color. June-July.

DELPHINIUM. Long spikes. June-July. **Belladonna,** skyblue. **Bellamosa;** dark blue.

DELPHINIUM PACIFIC HYBRIDS. Large flower spike of varied blue pastel shades. Each 75c; 3 for \$2.00

LYTHRUM. (3 ft.) Two new greatly improved varieties. June-Sept. **Morden's Pink,** bright pink. **Morden's Gleam,** carmine.

PYRETHRUM, Painted Daisy. (18 in.) Hybrids, daisy-like flowers in various shades of pink, Fern-like foliage; May-June.

REGAL LILY. The very popular white trumpet lily shaded pink and gold. June-July. Large bulbs.

SCABIOSA, Pincushion Flower. (18 in.) Charming border and for cut flowers, June-Sept.

SILVER KING, Artemisia. Striking silver white foliage. Ideal for mixing with cut flowers and winter bouquets.

SHASTA DAISY. Large snow white flowers, long season.

SHASTA DAISY. Double White; Double crested center.



Columbine

"PLANT 'EM GROWING"

We will have a large selection of Perennials including most of the above and numerous additional varieties established in containers for your selection throughout the summer and fall.

Hardy Phlox

This group of perennials is rich in gay color from July on; fragrant.

CHARLES CURTIS. Flashing trusses of deep, clear, red.

E. J. FARRINTON. Large salmon-pink, deep rosy-red blush. Excellent cutter.

ELIZABETH ARDEN. Free flowering, heavy bloom are soft pink, red eye.

FLASH. New large, rosy-red, one of the best.

MARY LOUISE. Very fragrant, pure snow white heads, prolific bloomer.

DWARF PHLOX

PHLOX SUBULATA. Early spring flowering, moss-like evergreen foliage. Excellent for border and ground cover. Four varieties, bare root clumps.

ALBA. Beautiful white flowering.

BLUE HILLS. Light blue flowers. Compact plant.

EMERALD CUSHION. Beautiful foliage, rich pink flowers.

SAMPSON. Lavender flowers, not as evergreen.

GLADIOLUS BULBS

Loveland Glad Gardens, a division of Kroh Bros. Nurseries, has supplied bulbs of choice varieties to many satisfied customers in this area and throughout the country. Varieties listed are carefully selected for their beauty, vigor, and dependable performance.

Glads are quite easily grown and are not exacting as to soil. For best results we suggest they be planted in rows of 18 to 24 inches apart with about 3 large bulbs or 5 to 6 medium bulbs per lineal foot. Of most importance is the planting of good varieties and young vigorous bulbs.

We offer in this listing two sizes "large" and "medium"; both bloom quite freely with average care. A large bulb should produce a little taller spike with 2-4 more buds. Small size and bulblets available on inquiry.

PRICES quoted are Post Paid on orders of \$3.50 or more. Smaller orders add 10% for postage.

GLADIOLUS BULBS are measured in diameter only. Large 1 1/4 inch up . (Medium 3/4 inch to 1 1/4 inch.)

A.A.G.S. INTRODUCTIONS

The following All-American Gladiolus Selections are the first to be awarded and should prove to be the finest Glads introduced.

1959 A.A.G.S.

JOYOUS: Very elegant rich velvety deep rose colored. Joyous is a splendid new variety. Formal, beautifully ruffled, precisely styled and brilliantly colored. It has eight or more medium size florets open at once on a 20-bud spike. JOYOUS will be a heart-warming addition to any glad garden.

1959 A.A.G.S.

SPARKLER: As graceful as a butterfly and just as colorful. A skillful blending of clear yellow shading somewhat deeper as it surrounds the bright red lips. The medium size florets are ruffled with each petal tip-fluted to give an airy butterfly effect.

1958 ALL AMERICAN GLADIOLUS SELECTION

EMPEROR. This glad of regal purple trimmed in ermine-white presents a stately display. Emperor makes majestic spikes growing five feet or more tall with 7-8 of its round, recurved florets open at one time.

1957 A.A.G.S.

CARIBBEAN. Blue violet with violet throat and cream spear. 9 to 10 open on tall spike with extreme vigor.

1956 A.A.G.S.

APPLE BLOSSOM. A very delicate snowy white, faint cream throat, edges of petals touched with a soft rose.

MAYTIME. Pure pink with large white throat 8 to 10 silky taffeta florets open on a tall robust 20 bud spike.

ROYAL STEWART. A clear light red, ruffled florets of good substance, constant fine performer; very healthy.

Priced (All varieties and large bulbs only) 35c each, 3 for \$1.00, 12 for \$3.45 of one variety or a combination of varieties. 1 each of the 7 varieties \$2.10

Newer Glads

Our selection of the more recent introductions are very beautiful and reliable, well worthy of your consideration.

	Large	Medium
EXOTIC—ruffled, soft buff salmon, white throat	2 for \$.25	3 for \$.25
FLORIBUNDA—vigorous, pastel pink, large florets	2 for .35	2 for .25
FORSYTHIA—chartreuse shading to clear medium yellow	2 for .35	2 for .25
GRATIA—light to medium blue, deep blue violet lower pedal . . .	2 for .25	3 for .25
LOOK—pure, rich, light pink, never flecks	2 for .25	3 for .25
PRINCESS—rich, medium lavender, darker feather	2 for .35	2 for .25
TAN GLO—pastel tan with rosy tint, good placement, strong . . .	2 for .35	2 for .25
TRAVELER—light rose pink, deeper throat mark	2 for .25	3 for .25
WHITE TOWER—pure white, red dart on cream throat blotch	2 for .25	3 for .25
WINONA—ruffled cream, light cerise throat lines	2 for .35	2 for .25

ABOVE: 2 for 35c are 10 for \$1.50; 2 for 25c 10 for \$1.00; 3 for 25c, 10 for \$.75

Choice Varieties

The following group of choice varieties being our selection of the slightly older and better known are all moderately priced.

All Varieties Priced

Large Size Bulbs: Each variety 3 alike for 35c; 6 alike 60c; 12 alike \$1.00

Medium Size Bulbs: Each variety 4 alike for 25c; 12 alike 65c; 25 alike \$1.25

Assortment: (See Back Cover)

- ALFRED NOBEL.** A deep pink with a large cream blotch.
- BARRETT'S BEAUTY.** Ruffled white with lavender lines in the throat.
- BOISE BELL.** Contrasting ruffled, rich pink with yellow throat.
- BRIDAL ORCHID.** Beautifully ruffled, large pastel lavender.
- BUCKEYE BRONZE.** Rusty ruffled bronzy orange. Very popular glad.
- BURMA.** Deep ruffled, reddish rose. Straight spike.
- CAPTAIN KIDD.** Dark, velvety maroon red. Produces tall spikes.
- COLUMBIA.** Strikingly beautiful light cream, rose border around each petal.
- CORAL ACE.** Bright, rich coral. A sport of Burma.
- CRINKLE CREAM.** Beautiful large ruffled clear light yellow.
- CRUSADER.** A frosty snowy white beautifully ruffled, purple throat.
- ELMER'S ROSE.** A highly ruffled true rose with purple feather in throat.
- FLORENCE NIGHTINGALE.** Fine ruffled clear white, light cream throat.
- GOLDEN ARROW.** Tall clear light yellow. Opens 8 recurved florets.
- HAN VAN MEEGEREN.** Deep butter cup yellow. Medium height, healthy.
- HEARTS DESIRE.** Beautifully ruffled, large light pink, cream throat.
- INDIAN SUMMER.** Smokey burnt orange, edged plum red marking on lower petals.
- JUNO.** A frilled rose chiffon, undertone of salmon. 7-8 florets open on tall spike.
- KING DAVID.** Deep royal purple with rich velvet red throat.
- LEAH GORHAM.** Striking, attractive light red, clear white throat.
- MOTHER FISCHER.** One of the best new whites, immaculately chaste, ruffled.
- MY DEAR.** Nice early ruffled medium size pink, lots of sparkle.
- MYRNA FAY.** Early orchid-lavender opening 10 florets, willowy spike.
- NOWETA ROSE.** Clear lavender-rose, with 6-8 open on a 20 bud spike.
- OKINAWA.** Chocolate, rose-orange tints, reddish-brown throat.
- PACTOLUS.** Ruffled apricot-cream with striking orange-red blotch.
- PAINTED LADY.** Deep pink with a prominent pure white throat, ruffled.
- PARTHIENA.** A giant ruffled deep lavender. 6-8 open at one time.
- POINSETTIA.** Pure light spectrum red, with slightly ruffled florets.
- PURPLE BURMA.** Purple sport of Burma early, ruffled, suede like substance.
- RADIANCE.** A early light red with deeper feather in the throat.
- RAJAH.** A royal purple with no markings, large florets, ruffled.
- RED CHARM.** Deep sparkling clear red. Wonderful growing habits.
- RED CHERRY.** Brilliant cherry-red, slightly darker throat, one of the best.
- RED FEATHER.** Immense deep red, huge spikes. Perfect formation.
- RED WING.** Fine ruffled scarlet opens up to 10 large florets.
- REGINA.** Clear amber orange, red throat blotch. Heavy textured.
- ROBINSON CRUSOE.** Tan, heavily marbled deep rose-chocolate, striking.
- ROYAL TREAT.** Ruffled deep blood red, florets of heavy texture.
- SNOWCLAD.** Excellent white, heavy substance, good placement. Long flowerheads.
- SNOWDRIFT.** Heavy substance, chaste round florets, very formal placement.
- SOUTHERN BELLE.** Vivid pink, with a contrasty snowy throat.
- SUE & SPAN.** Tall ruffled pink. Nearly perfect growth, spike and placement.
- STORMY WEATHER.** A rose ash with tall spikes. A good smoky.
- STYLISH.** A medium pink shading to creamy pink throat with small pink blotch.
- SWEET SIXTEEN.** Pastel pink that shades to light cream on lower petals.
- WHITE CLOUD.** Truly a pure white, huge florets, ruffled.
- WHITE GODDESS.** Heavily ruffled white, cream throat.

Peonies

FELIX CROUSSE. An always popular full double variety of bright ruby red color. Mid-season **Each \$1.00 P. Pd.**

FESTIVA MAXIMA. Double large pure white with flecks of crimson. Early mid-season. **Each \$1.25. P. Pd.**

SARAH BERNHARDT. Apple-blossom pink with a silvery edge on petal. **Each \$1.00 P. Pd.**

SPECIAL OFFER. One each of the above three Peonies. **\$2.95 Post Paid.**

Dahlias

We offer Holland grown plants of Giant flowering Decorative and Cactus Dahlias.

Eight colors; Red, Yellow, Orange, White Pink, Salmon, Red & White, and Purple & White. **Your choice 75c each 3 for \$1.75; 12 for \$6.50 postpaid.** Please give colors desired.

Inquire at Nursery for alternate varieties of bulbs and tubers including Hardy Lilies, Daylilies, Cannas, Caladium, etc.



It enables the giving of a plant or credit to apply in any season to be furnished by us at the proper planting time. Plant, or plants desired may be left to your loved ones choice. One of the most appreciated remembrances regardless of the occasion: Christmas, Birthdays, Mother's Day, Anniversaries.

TREE TALK

Thousands of progressive folks will be doing new planting come spring.

The saying, "Its Not A Home Until Its Planted" is not just a mere slogan. It has become as basic a part of the home owner's domain as paint on the walls or furniture in the living room—and the family would certainly miss not having a planting around the home.

The thrifty person can't go wrong by investing in nursery stock for his property, since it starts increasing in value from the time it is planted. Then too, it is remarkable that the cost of nursery stock is moderate in view of the very high proportion of labor involved in its production.

INDEX

	Page		Page
Apples	1-2	"One Tree Apple Orchard"	1
Asparagus	3	Peaches	3
Baby Evergreens	19	Pears	3
Berries	4-5	Perennials	29
Cherries	2	Phlox	29
Chrysanthemums	26-28	Pines	20
Climbing Vines	25	Plums	3
Container established stock	19-25	Raspberries	5
Currants	4	Roses, Climbing	17
Evergreens	18-20	Roses, Everblooming	13-17
Flowering Crabs	1	Roses, Floribunda	14-15-17
Garden Roots	3	Roses, Shrub	17
Gladiolus Bulbs	30-31	Shade and Ornamental Trees	23-24
Gooseberries	4	Spirea	8
Grapes	4	Spruce	20
Hedge Plants	10	Shrubs	6-9
Junipers	18-19	Strawberries	5
Lilacs	9-	Windbreak Trees	10

We prefer not to substitute and will not do so without the customer's permission. However the demand of some items at times exceeds expectations before the end of the season.

If you have approved substitution on the other side of this order we shall use such size or variety that comes nearest if we happen to be out of your preference. Where larger alternate size is approved a net difference will be charged; likewise any difference due customer will be refunded. Where there is no suitable substitute, or if you have not instructed us to substitute, the full amount of any items not in stock will be refunded.

All stock is offered subject to supply and items are reserved in the rotation in which orders are received.



Plant America!
by
Planting Colorado

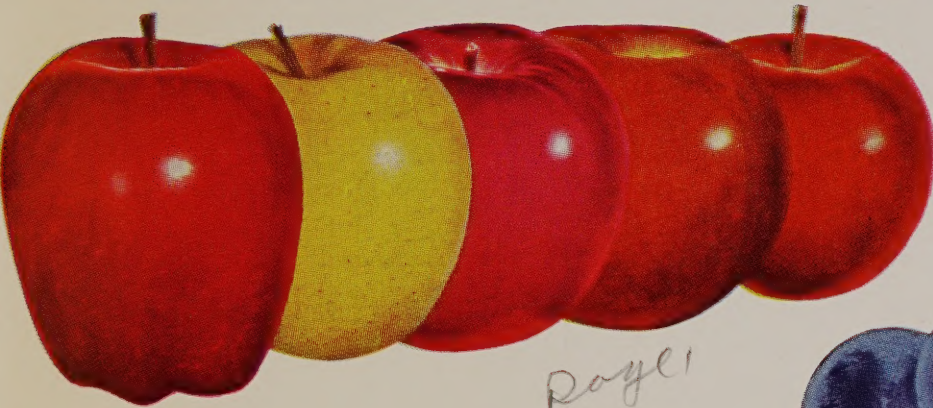
FRUIT TREES AND PLANTS for the Home Garden



P-2

MONTMORENCY CHERRY

Ideal for home and commercial orchard. See page 2.



royal

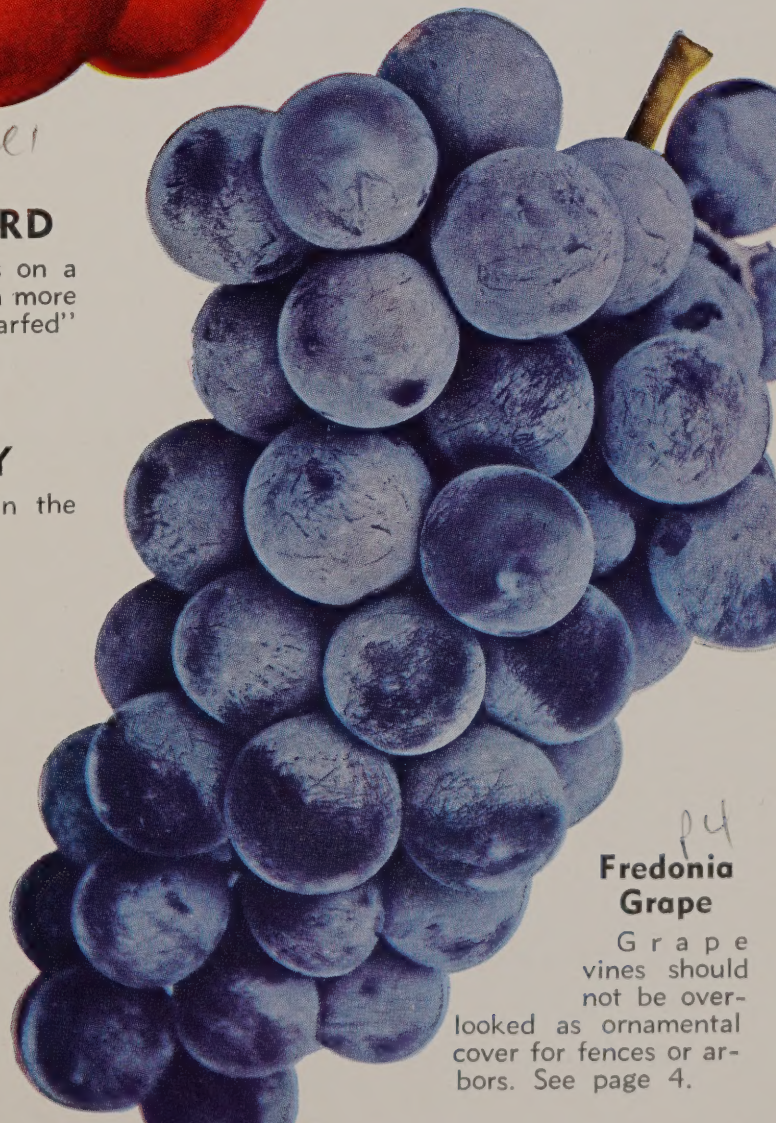
ONE TREE APPLE ORCHARD

We offer three to six varieties of Apples on a single tree. This horticultural novelty is much more dependable and productive than the "Dwarfed" trees, in the Plains Area. See page 1.

P-5

RADIANCE STRAWBERRY

The hardest EVERBEARER ever tested in the high plains. See page 5.



p4

Fredonia Grape

Grape vines should not be overlooked as ornamental cover for fences or arbors. See page 4.



MUMS

For an Added Month
of Flowers

Special Garden Assortment

10 plants in 5 or more colors, OUR selection, from any one of the following types:

No. 1—Cushion Varieties

No. 2—Semi-dwarf and larger Cushion

No. 3—Intermediate and Taller Varieties

\$4.75 Postpaid

Please Specify Type

**SEE OUR
COMPLETE LISTING**

For Successful Summer Planting Use Our Container-Established
**ORNAMENTAL TREES • SHRUBS • VINES • EVERGREENS
ROSES • PERENNIALS**

GLADIOLUS

The King of
the Cut Flowers

Fan - Making Assortment

Hand-selected of 25 or more varieties covering the complete color range.

All top quality bulbs. This is the best value if you are not interested in variety names.

Unlabeled—Postpaid

100 Large \$6.50
50 Large 3.50
100 Medium 5.00
50 Medium 2.75

250 Bulbs at
Twice the 100 Price

KROH BROS. NURSERIES

P. O. Box 536
LOVELAND, COLORADO

